



**SENATOR**

***SENATOR 500 CONFIGURATION***

<b><i>FOREWORD</i></b>	<b><i>3</i></b>
<b><i>FORWARD DECK</i></b>	<b><i>5-11</i></b>
<b><i>HELM</i></b>	<b><i>12-13</i></b>
<b><i>DECK</i></b>	<b><i>14-16</i></b>
<b><i>TRANSOM</i></b>	<b><i>17-19</i></b>
<b><i>DUCKBOARDS</i></b>	<b><i>20-21</i></b>
<b><i>HULL</i></b>	<b><i>22-25</i></b>
<b><i>MAKE IT YOUR OWN</i></b>	<b><i>26</i></b>

***PLEASE NOTE: TO ACHIEVE SENATOR'S CONTINUOUS IMPROVEMENT PROGRAM,  
DESIGNS AND THIS DOCUMENT MAY BE SUBJECT TO CHANGE.***

***THIS DOCUMENT SHOWCASES SOME OF THE AVAILABLE OPTIONS FOR THE SENATOR 500,  
OPTIONS SEEN HERE MAY BE UPGRADES AND MAY NOT COME STANDARD WITH THE SENATOR 500.  
FOR FURTHER ENQUIRES ABOUT UPGRADES AND OPTIONS PLEASE GET IN TOUCH WITH YOUR LOCAL DEALER.***

***FOR BEST REPRESENTATION IN THIS DOCUMENT SOME TEXTURES AND COLOURS HAVE BEEN MODIFIED.***

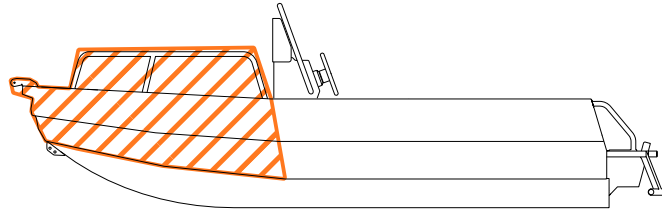
***TITLES MARKED WITH A “+” ARE CONSIDERED ADDED OPTIONS***

***+ EXAMPLE***

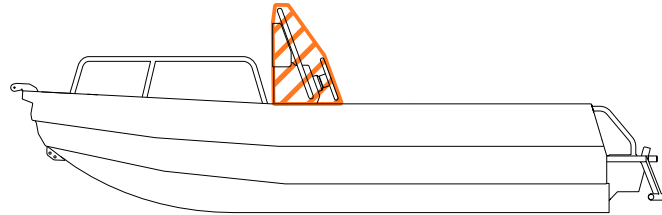


## / SENATOR 500

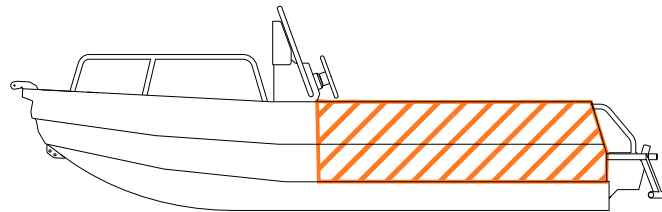
**FORWARD DECK**



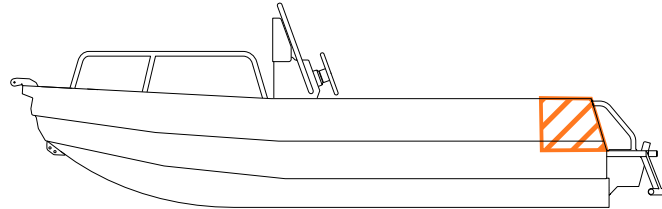
**HELM**



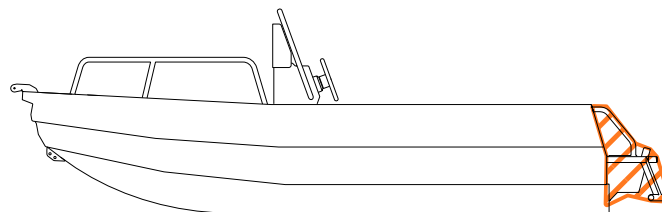
**DECK**



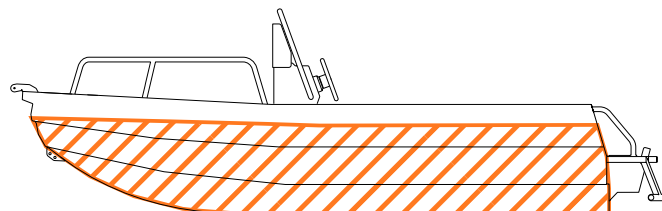
**TRANSOM**



**DUCKBOARDS**

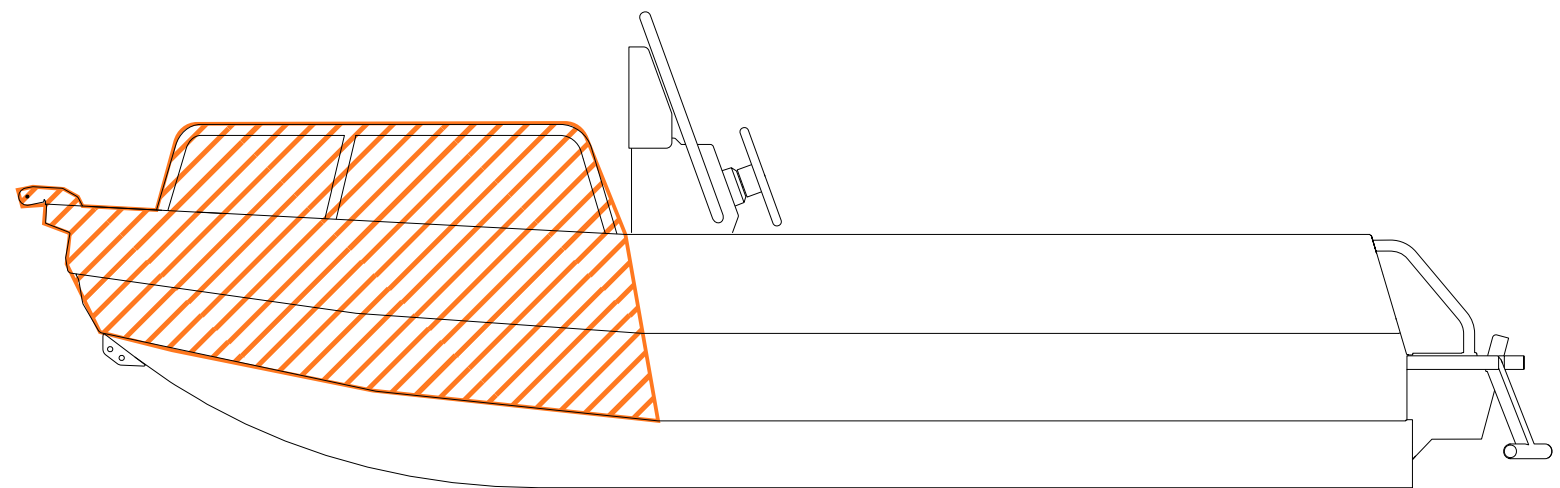


**HULL / OUTER PONTON**



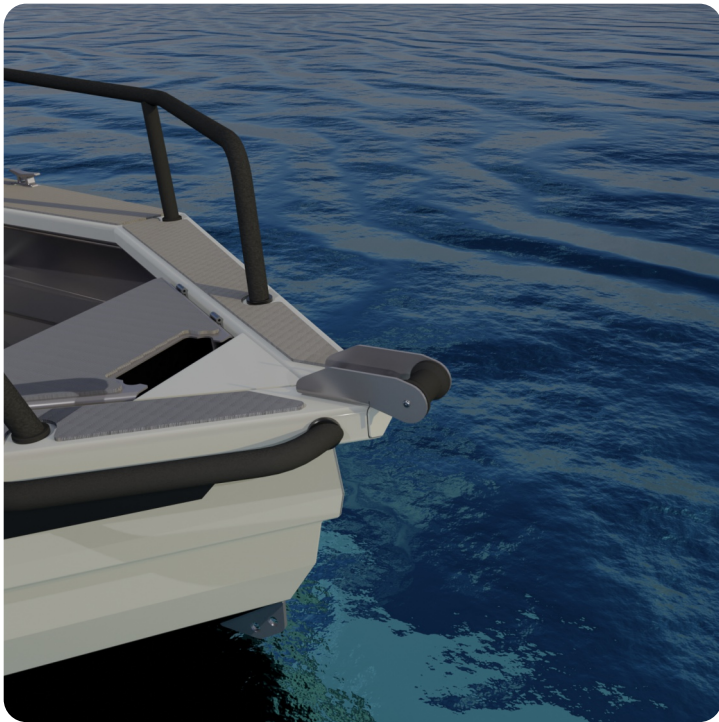


## ***FORWARD DECK OPTIONS***

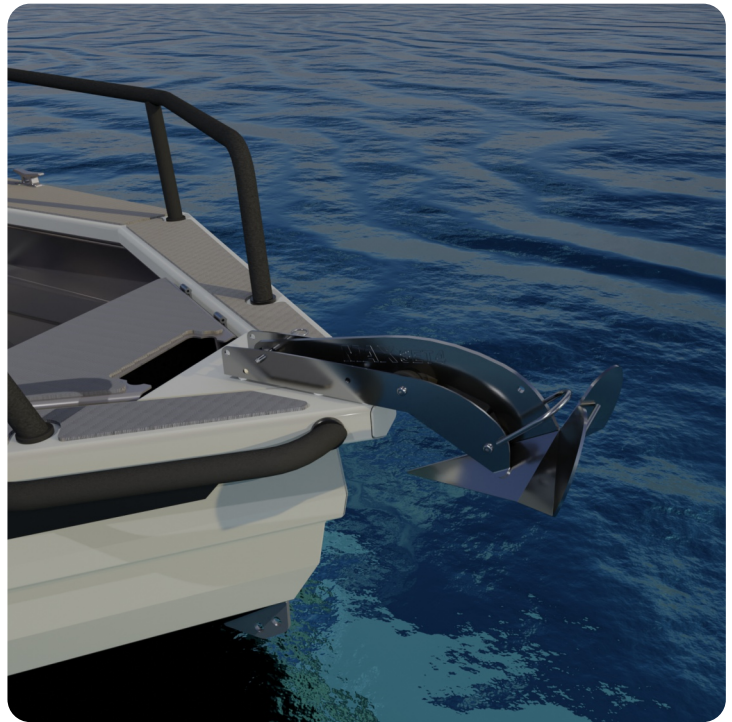


## / SENATOR 500

STANDARD - FAIRLEAD



+ DRUM WINCH FAIRLEAD

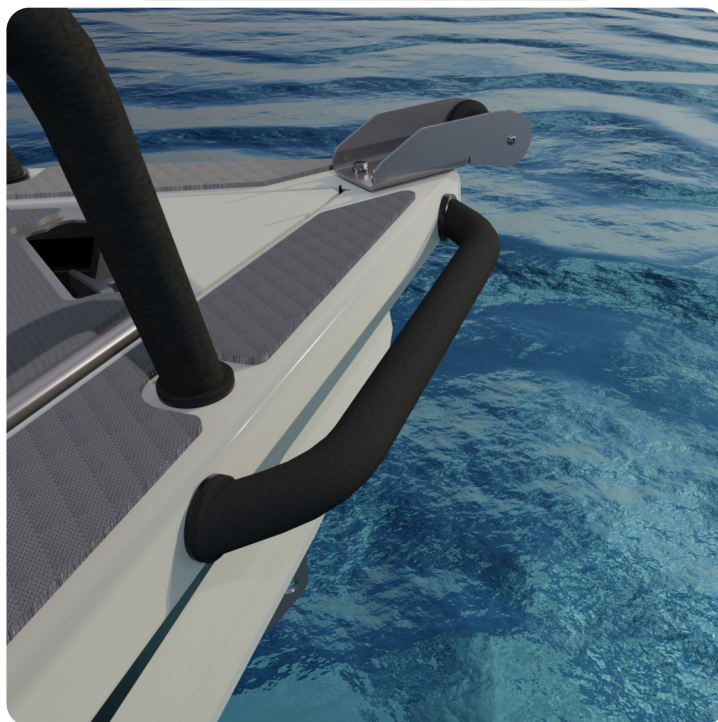


## / SENATOR 500

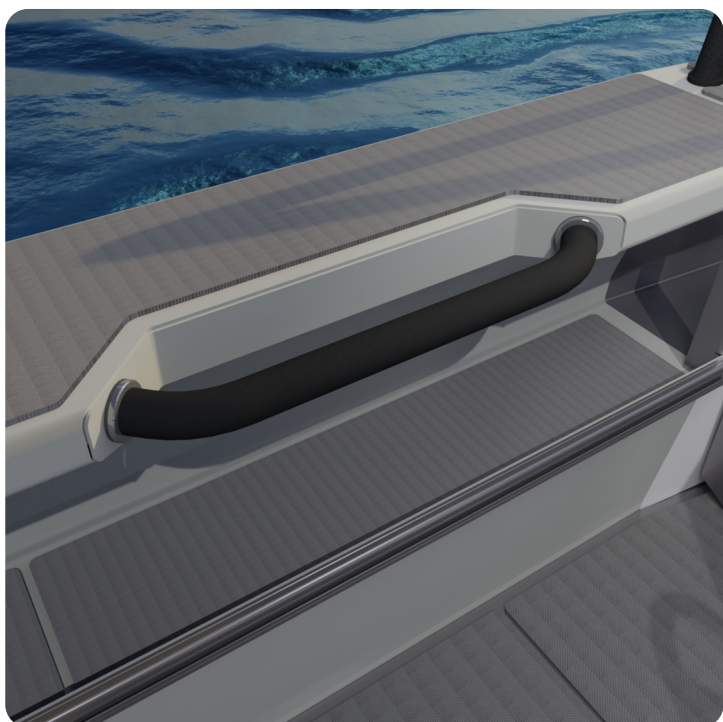
STANDARD - BOW RAIL POWDER COATED



STANDARD - FORWARD GRAB RAIL



STANDARD - PASSENGER GRAB RAIL



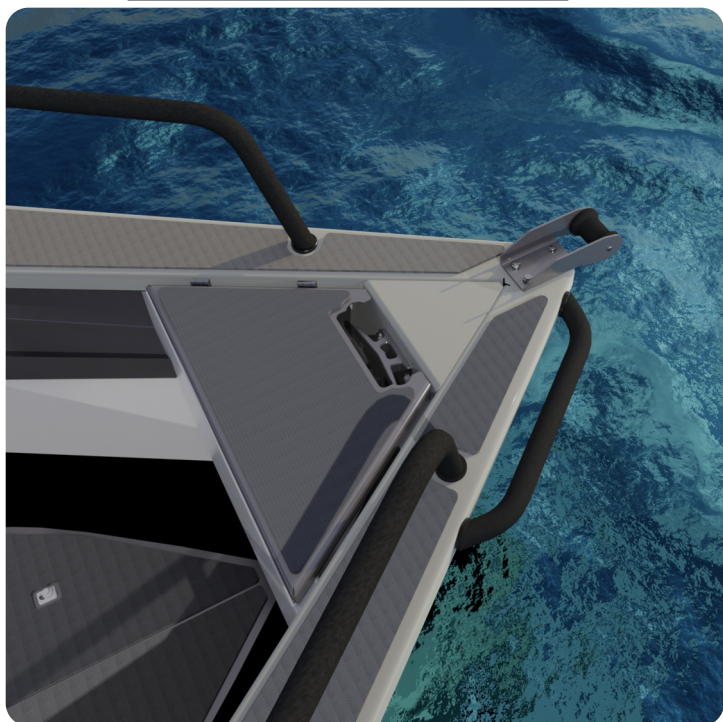
+ CANVAS BOWRAIL SPRAY COVERS



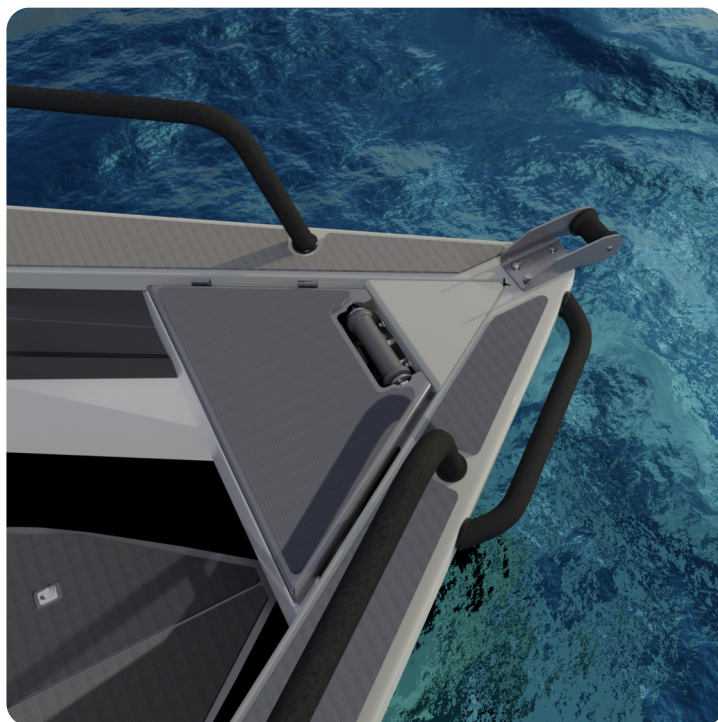


## / SENATOR 500

STANDARD - MANUAL ANCHOR LOCKER



+ DRUM WINCH

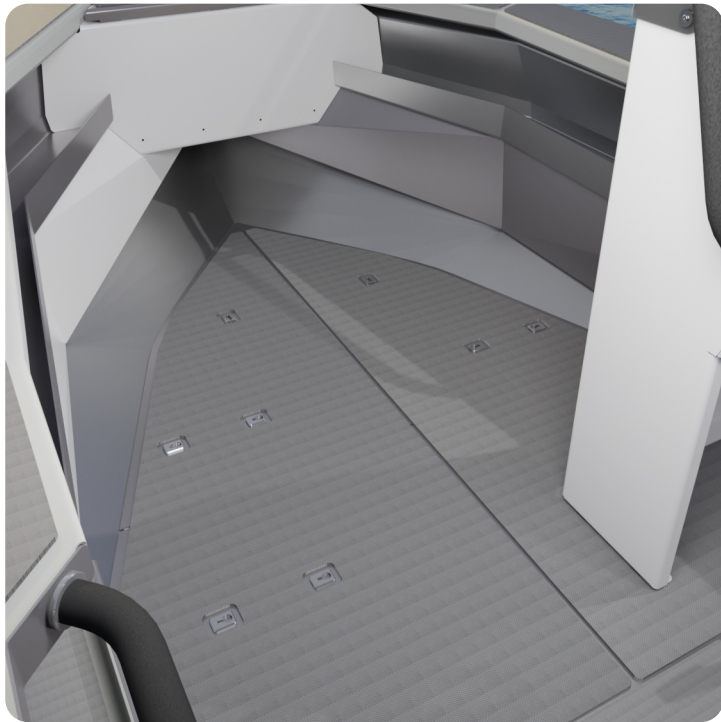


+ GPS ANCHOR

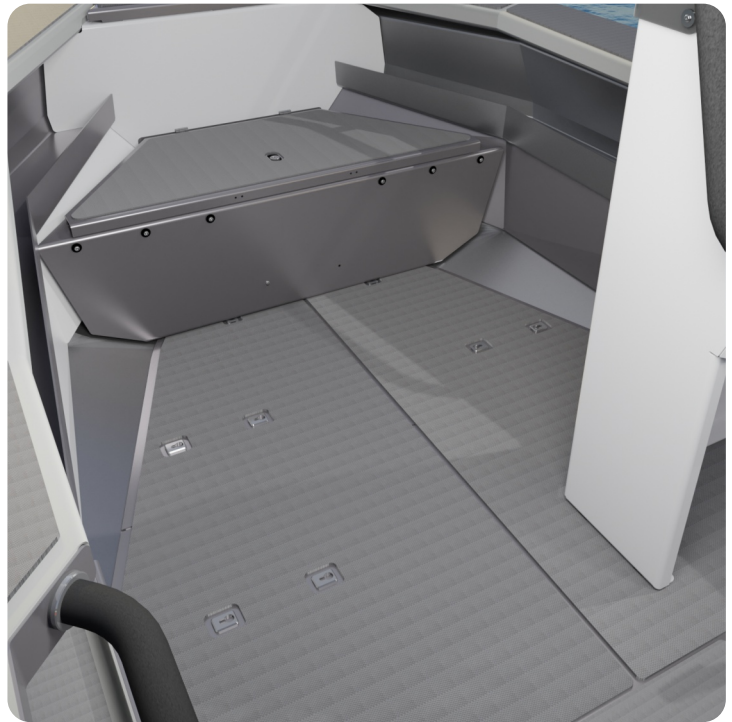


## / SENATOR 500

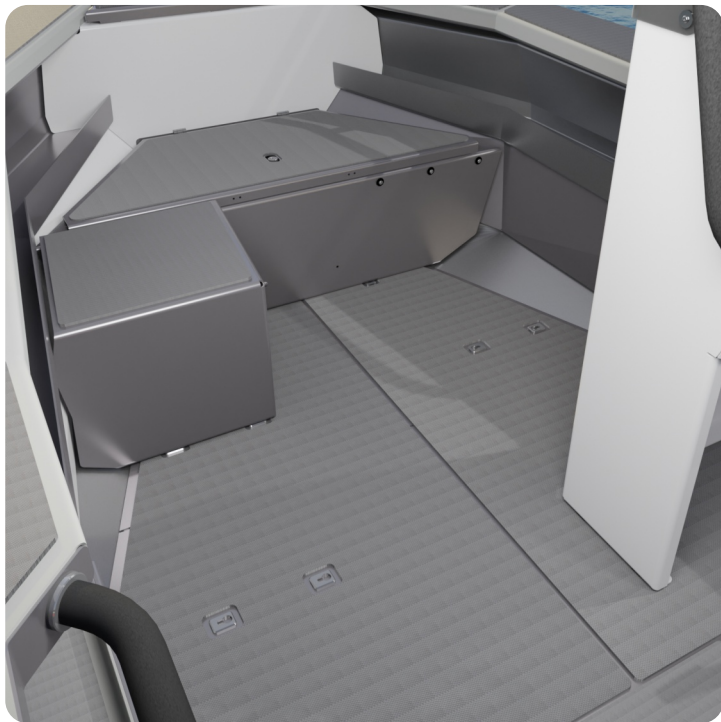
**STANDARD**



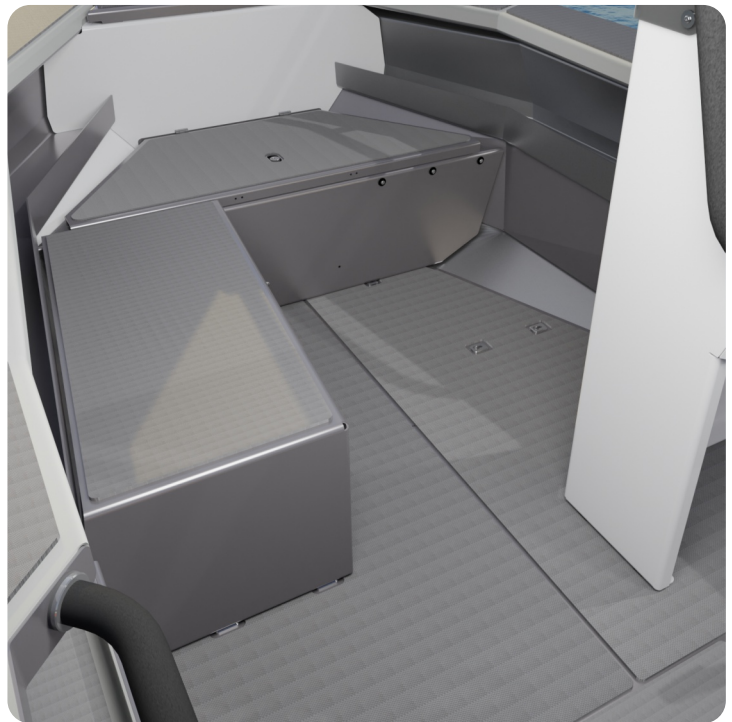
**+ FORWARD SEAT**



**+ PORT SHORT SEAT**



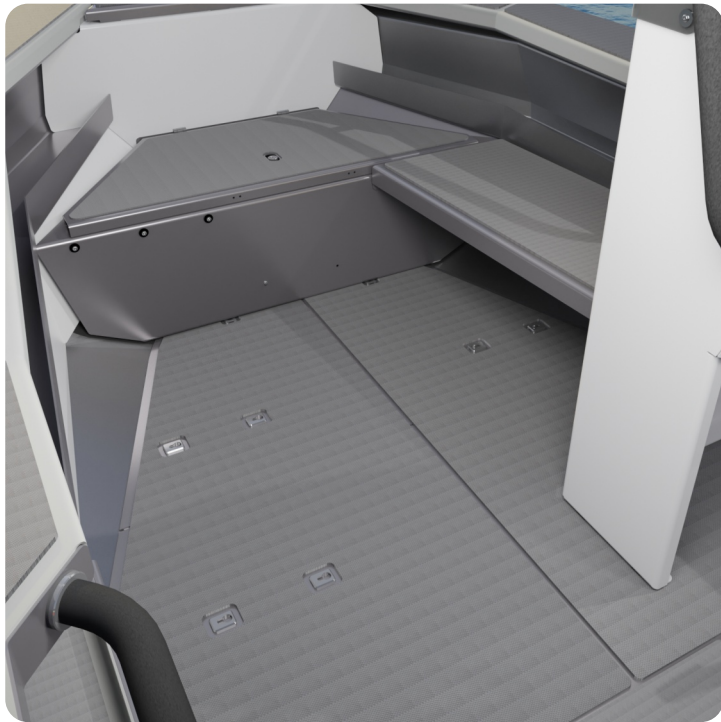
**+ PORT LONG SEAT**



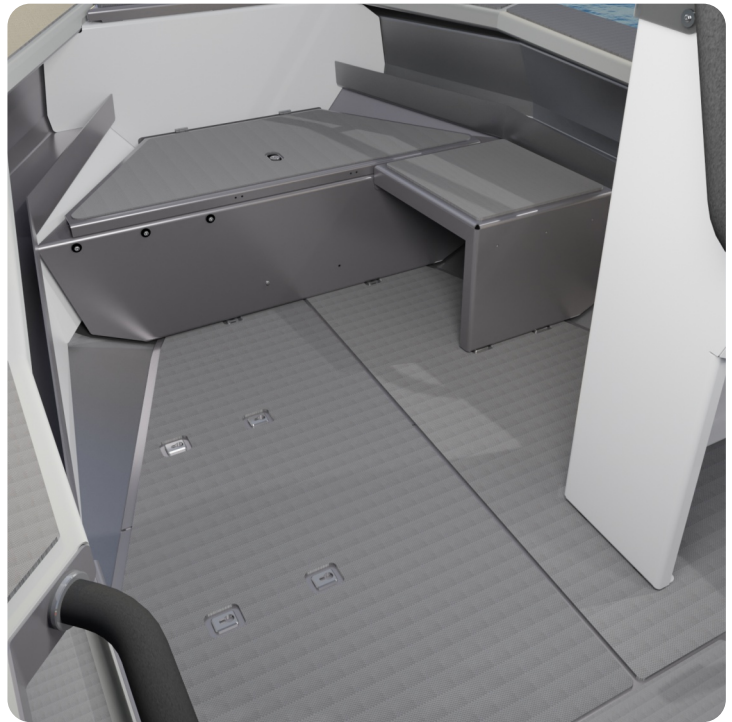


## / SENATOR 500

+ STARBOARD LONG SEAT



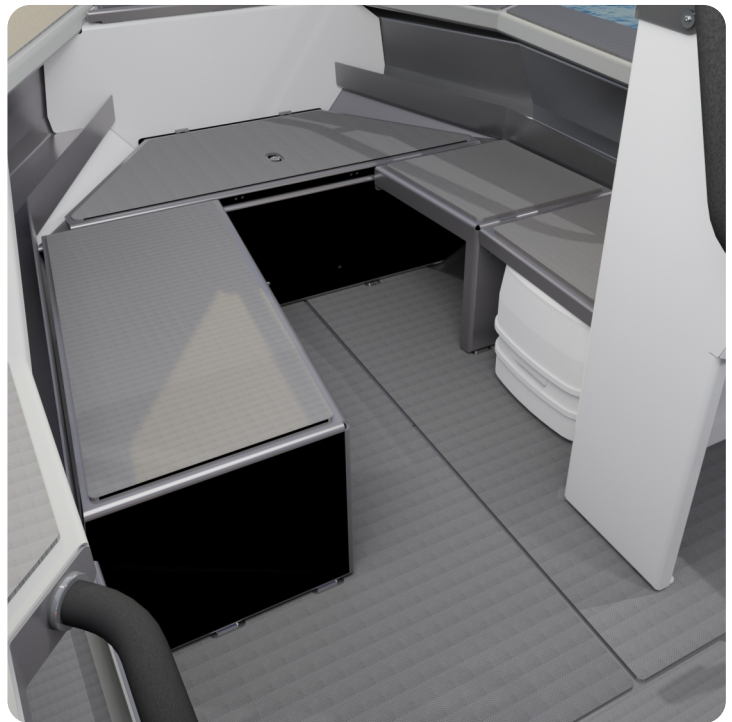
+ STARBOARD SHORT SEAT



+ STARBOARD CHEMICAL TOILET

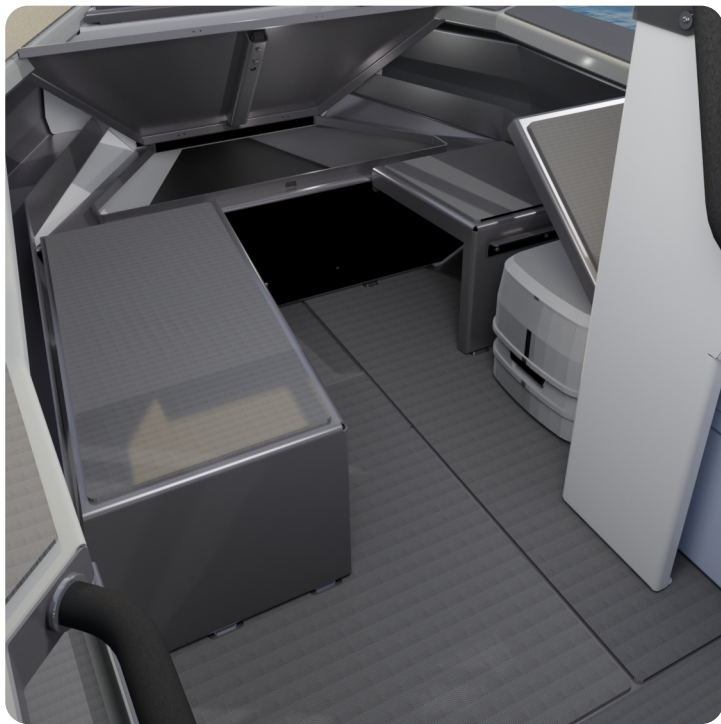


+ CONFIGURE THE WAY YOU WANT

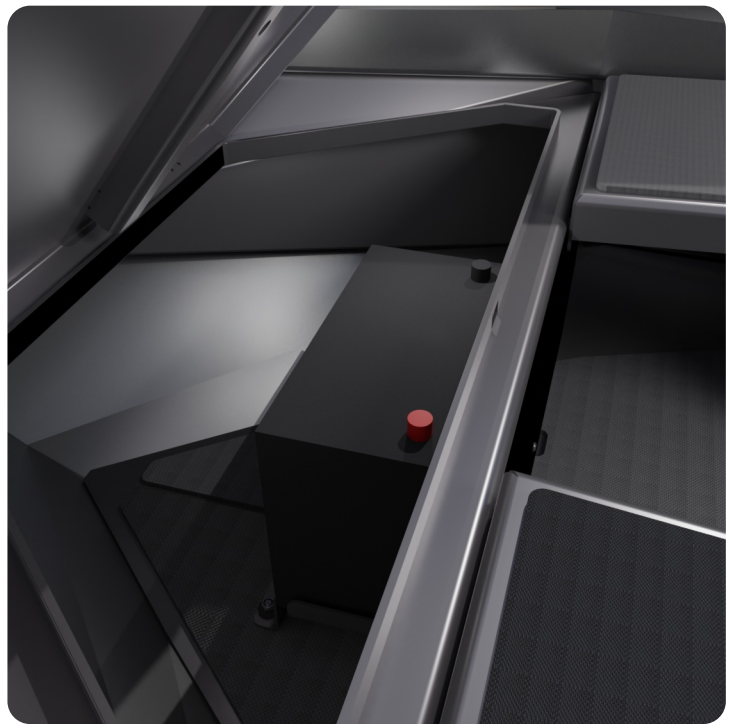


## / SENATOR 500

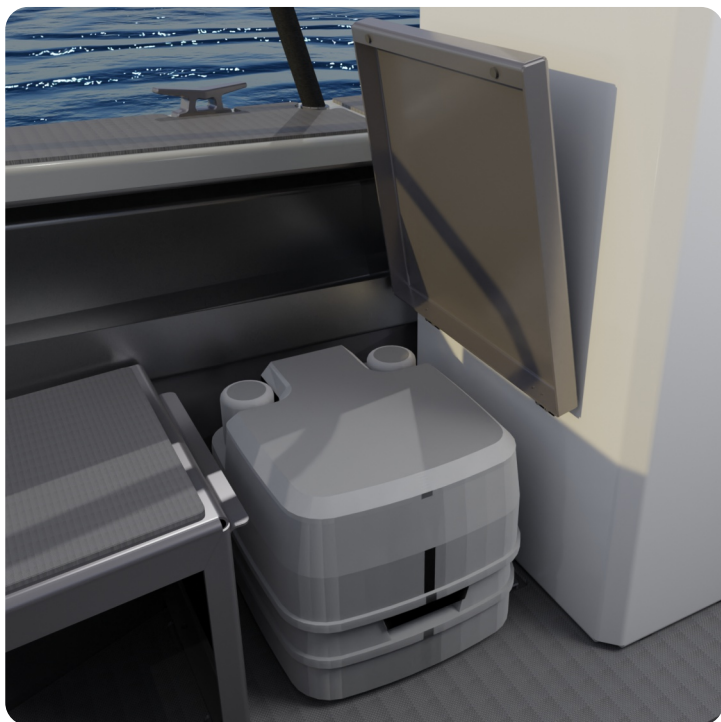
+ HINGED SEATING



+ GPS BATTERY LOCATION



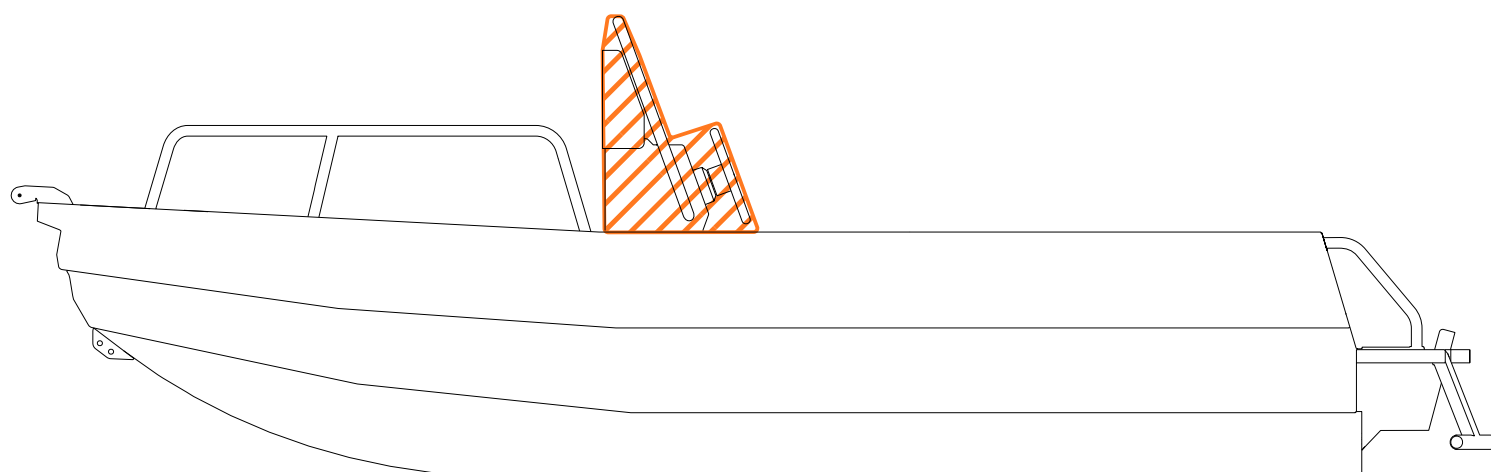
+ CHEMICAL TOILET





/ **SENATOR 500**

**HELM**

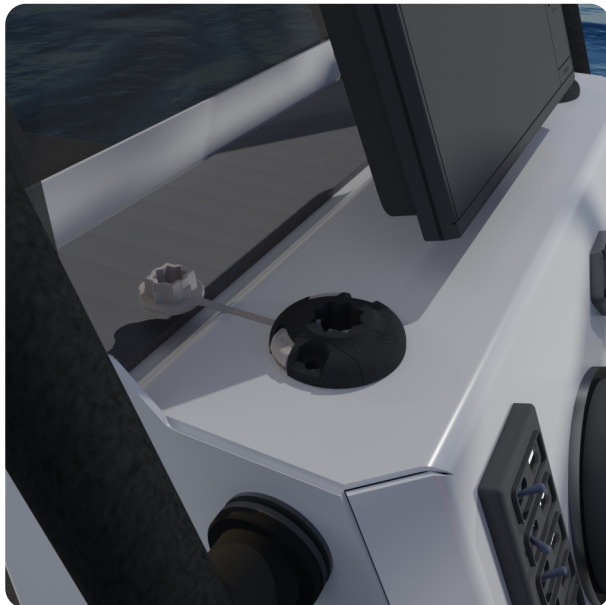


## / SENATOR 500

STANDARD - HELM & GRAB RAIL



STAR PORT



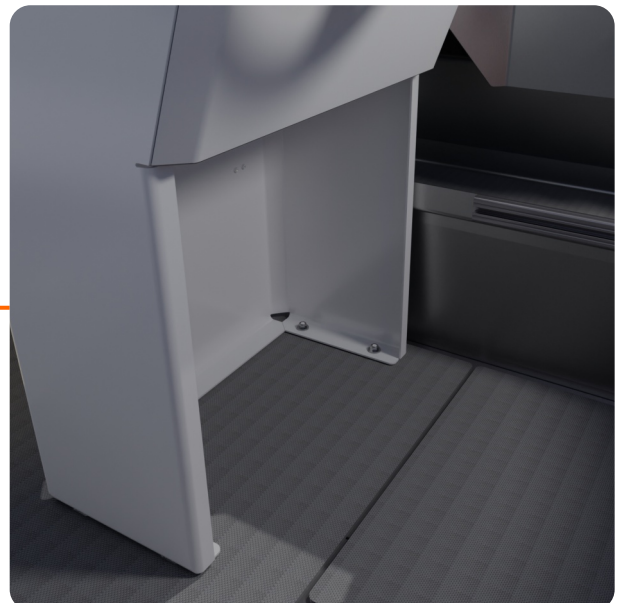
GRAB RAIL



SWITCH PANEL

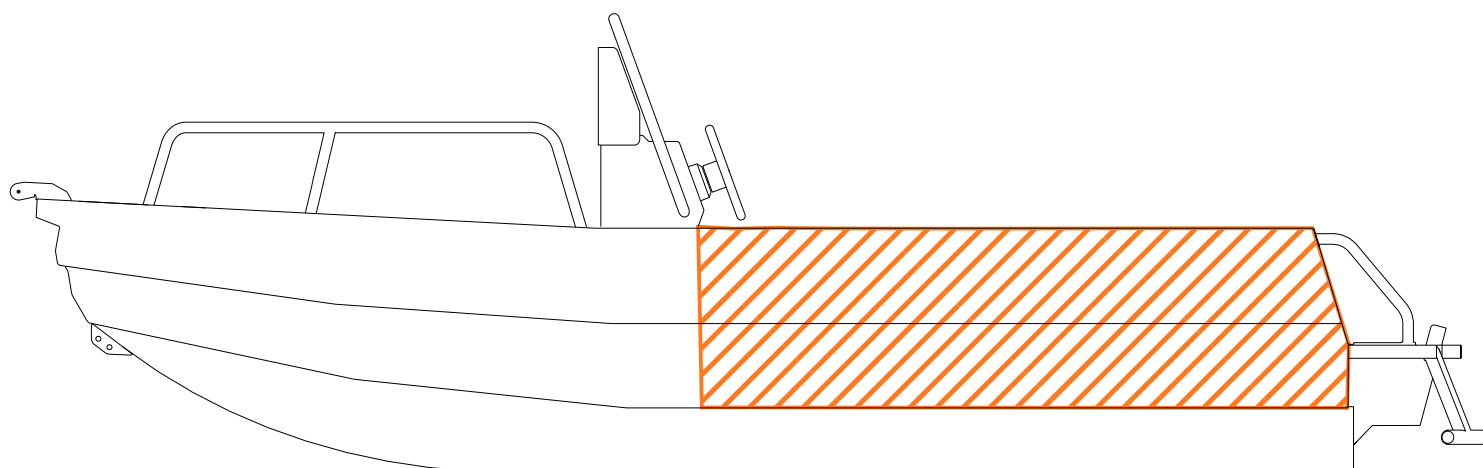


BIN STORAGE



**/ SENATOR 500**

## DECK

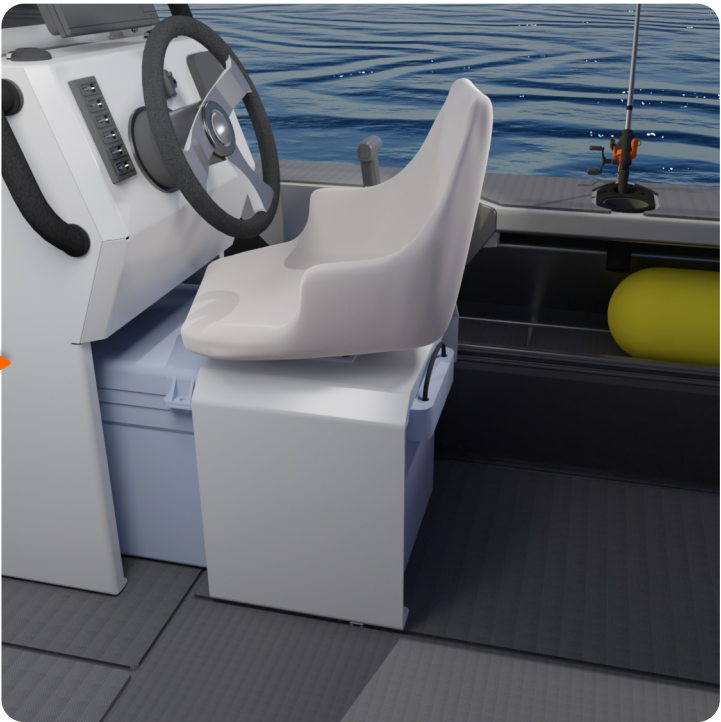


/ SENATOR 500

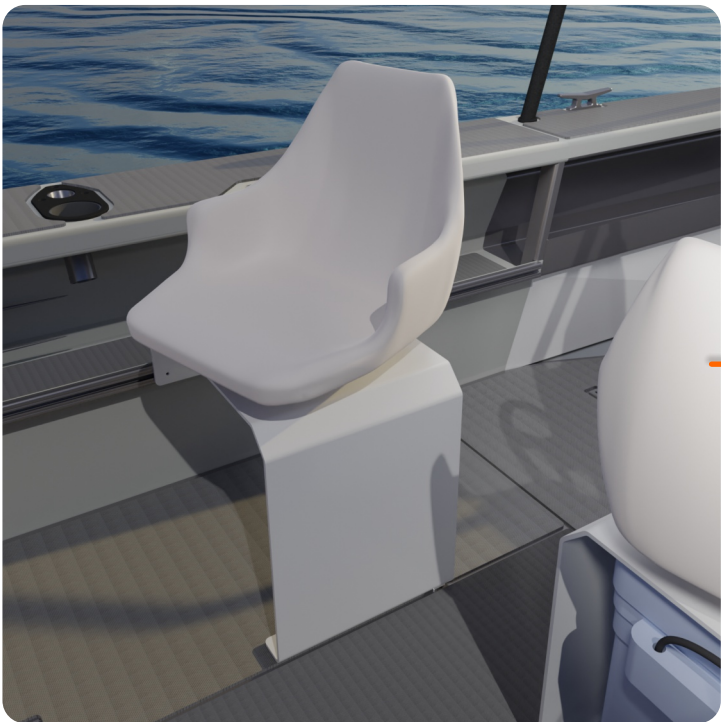
STANDARD - HELM BASE & CHAIR



RAIL SLIDE ADJUSTABLE



+ PORT SEAT



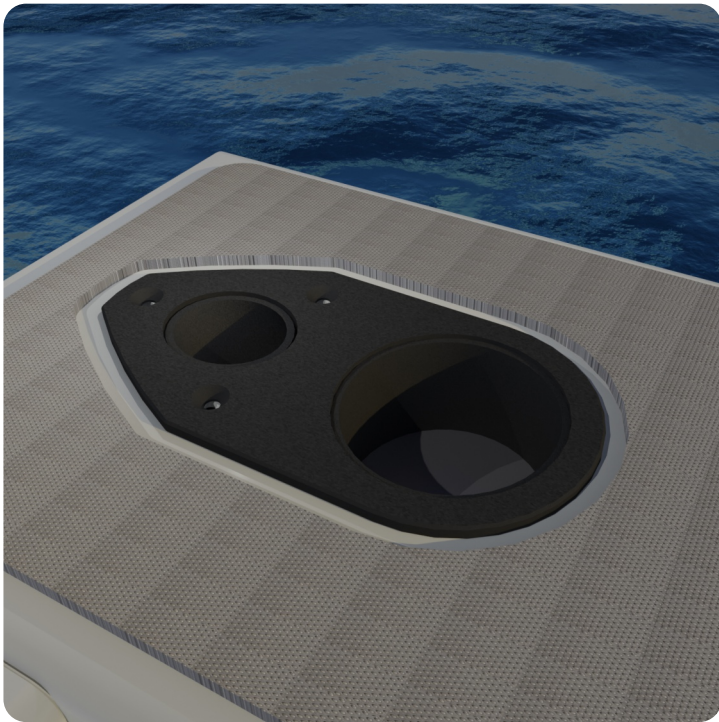
RAIL SLIDE ADJUSTABLE



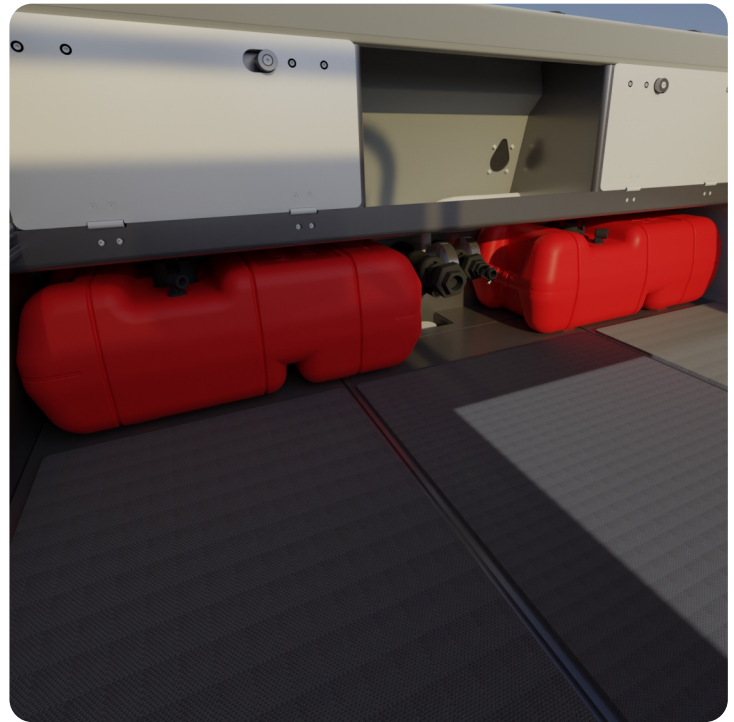


## / SENATOR 500

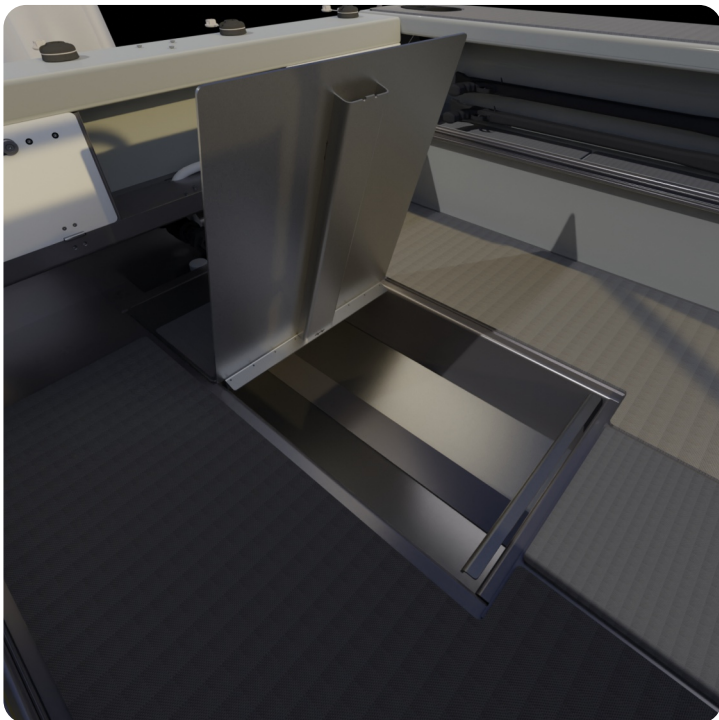
STANDARD - ROD CUP HOLDER COMBO



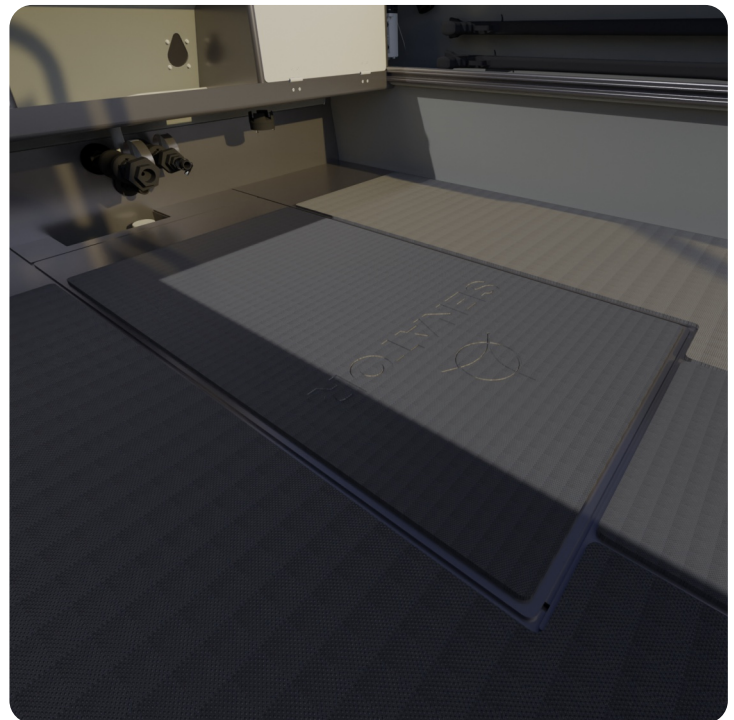
STANDARD - TOTE TANK



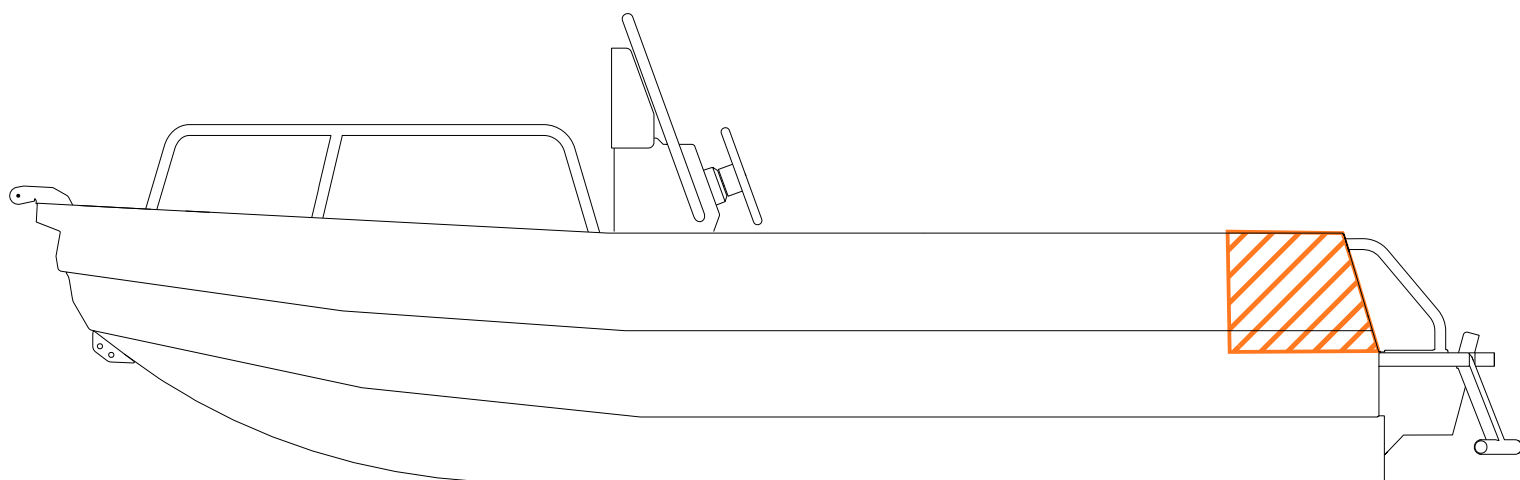
+ UNDERFLOOR STORAGE



+ UNDER FLOOR FUEL TANK



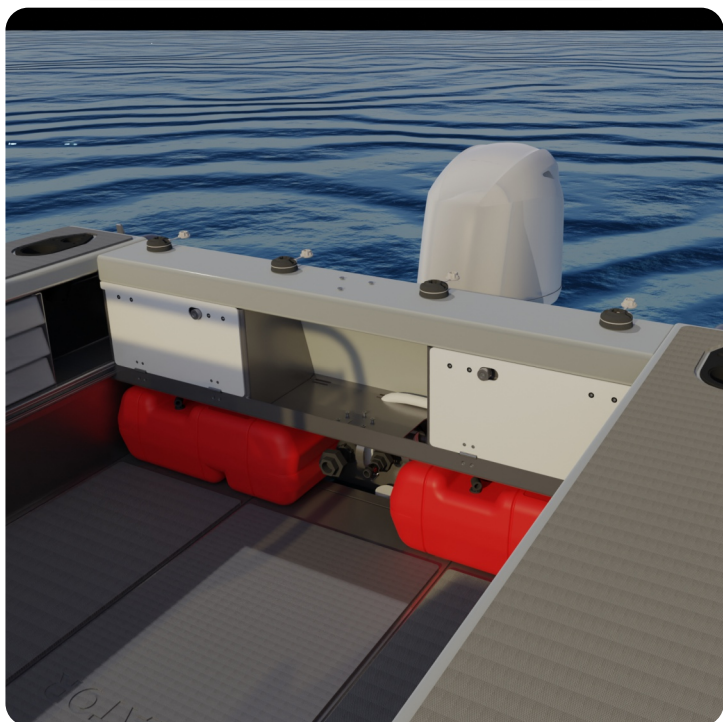
# ***TRANSOM***



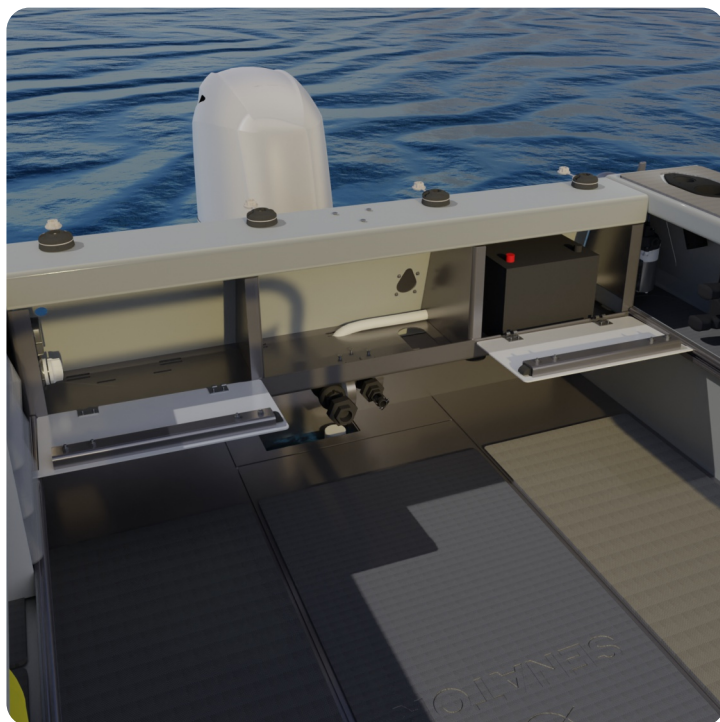


## / SENATOR 500

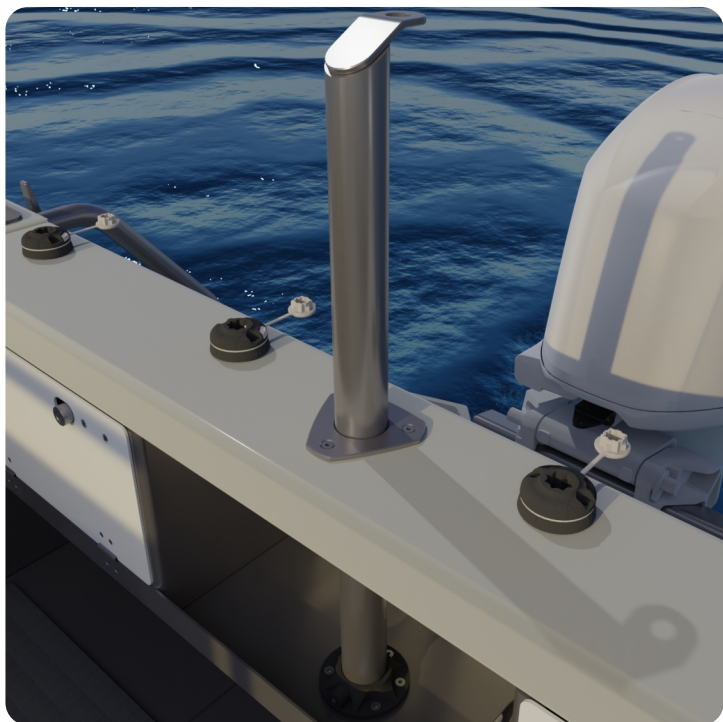
STANDARD - TRANSOM HATCHES



BATTERY STORAGE



+ SKI POLE



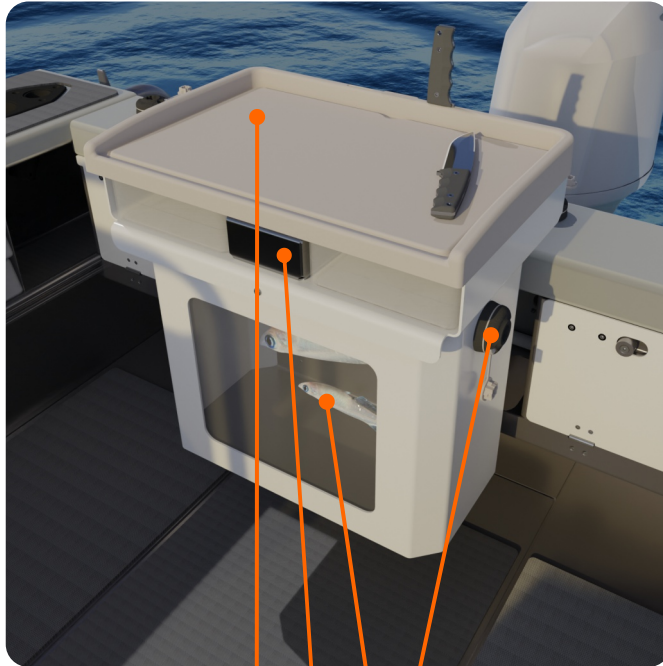
+ WASH DOWN SYSTEM



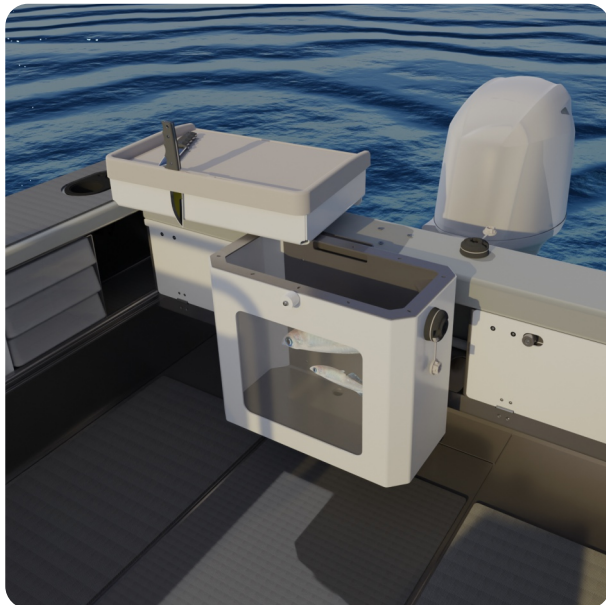


## / SENATOR 500

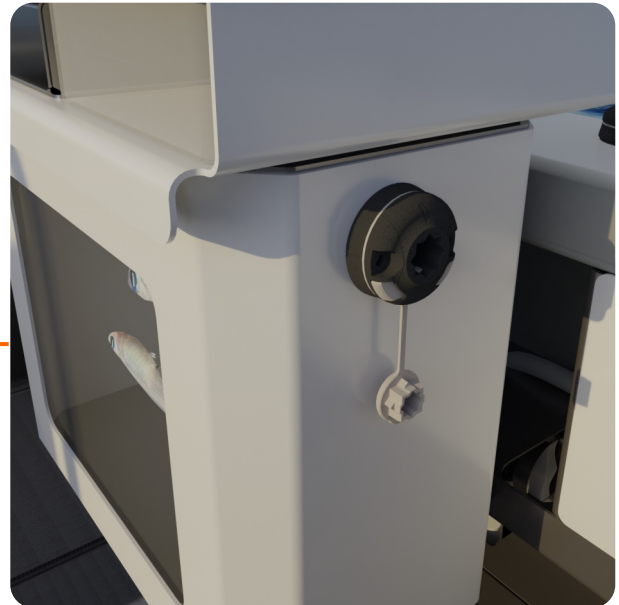
+ LIVE BAIT TANK



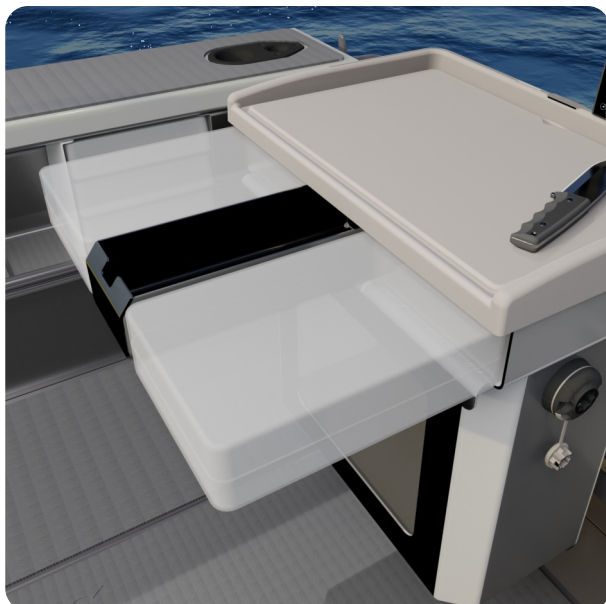
SWING AWAY BAIT BOARD



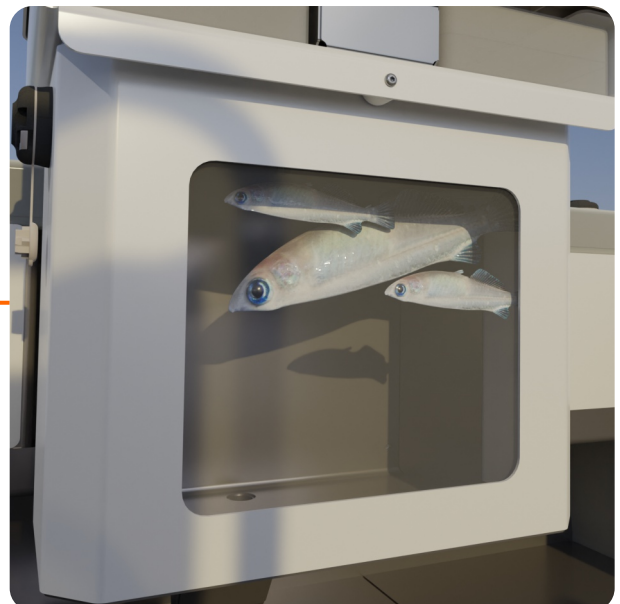
STAR PORTS



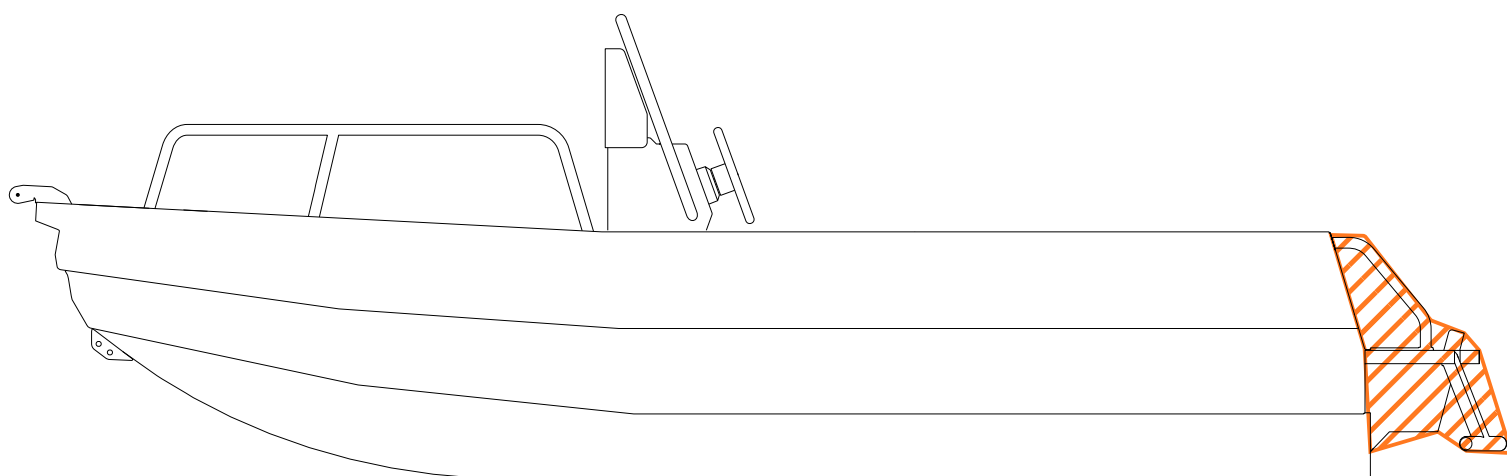
STORAGE SYSTEM



38L LIVE BAIT TANK

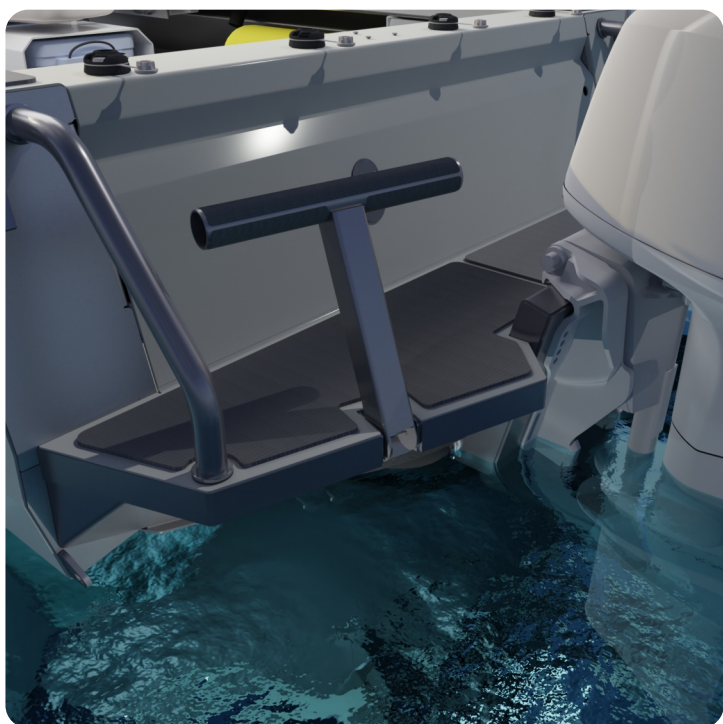


# ***DUCKBOARDS***



## / SENATOR 500

STANDARD - SINGLE RUNG LADDER

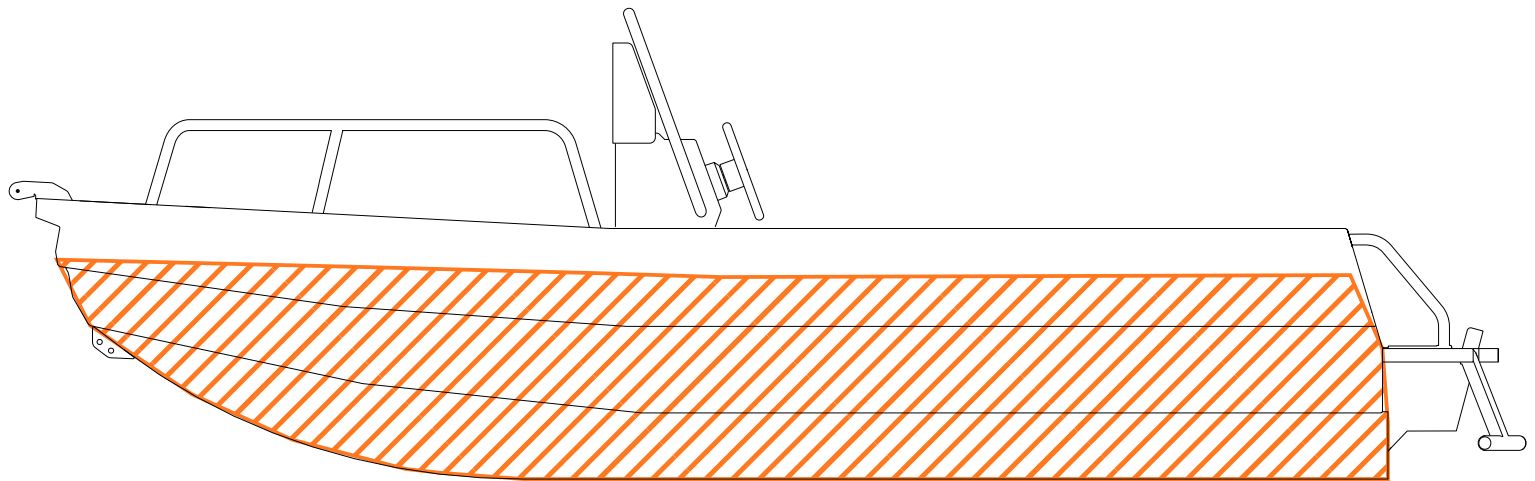


STANDARD - GRAB RAILS



**/ SENATOR 500**

## ***HULL / OUTER PONTON***





## / SENATOR 500

STANDARD - U-DEK AREA



## / SENATOR 500

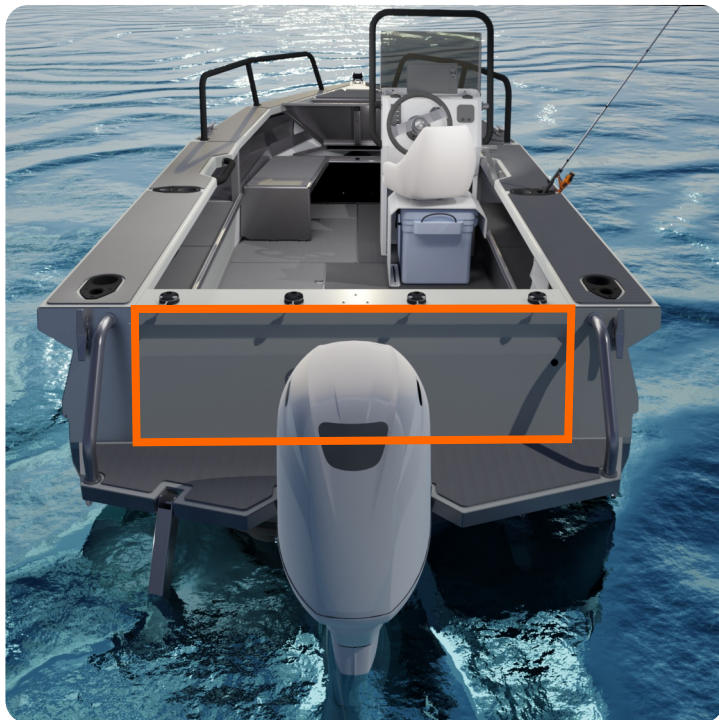
+ WRAP AREA - UPPER HULL



+ WRAP AREA - FULL HULL



+ WRAP AREA - REAR

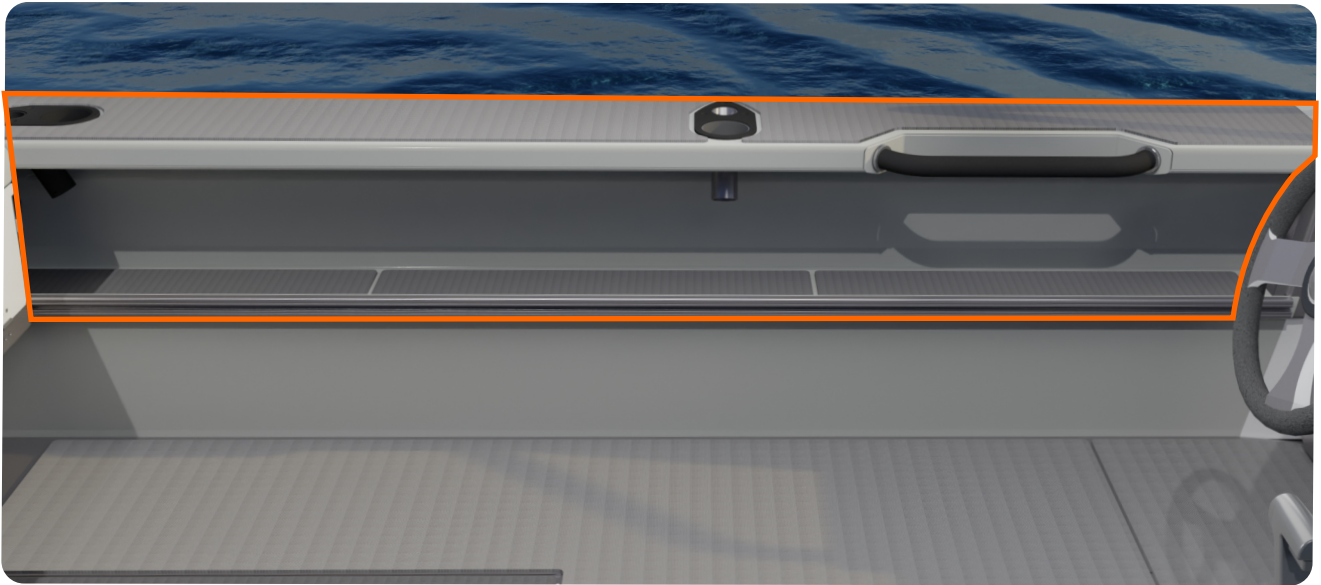


+ WRAP AREA - FULL HULL

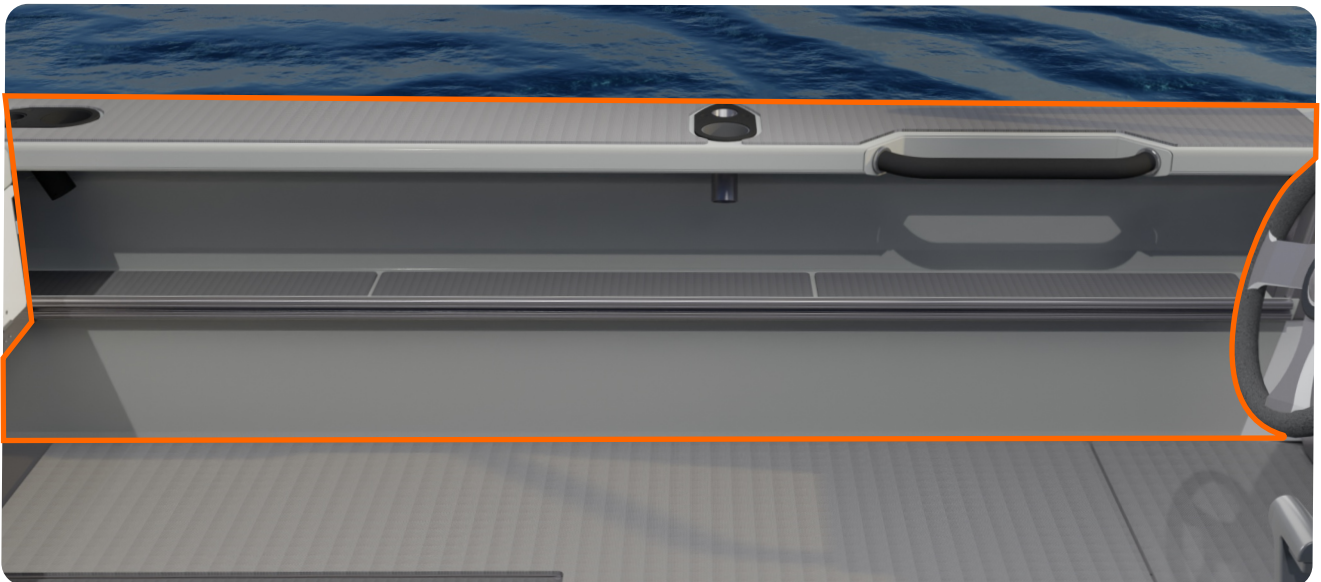


## / SENATOR 500

+ WRAP AREA - UPPER INTERIOR



+ WRAP AREA - UPPER INTERIOR & KICK PLATE

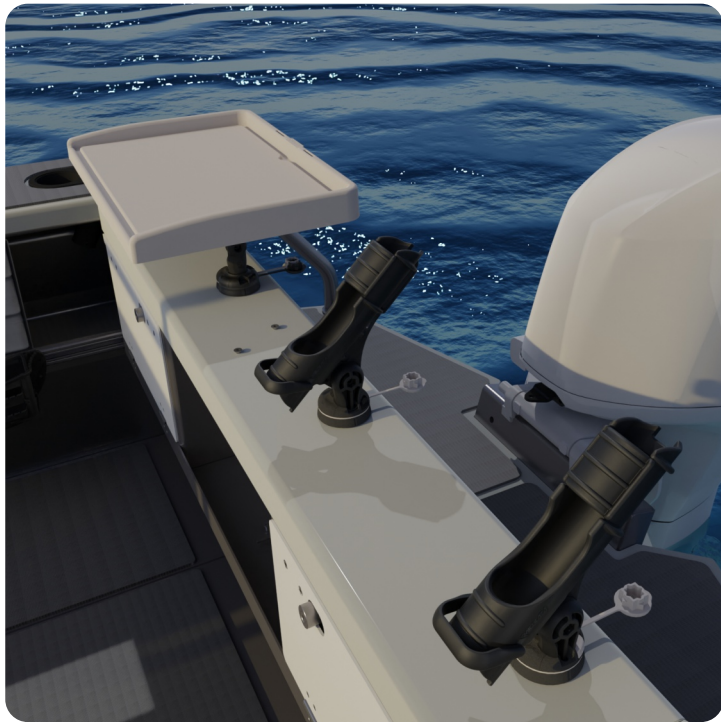




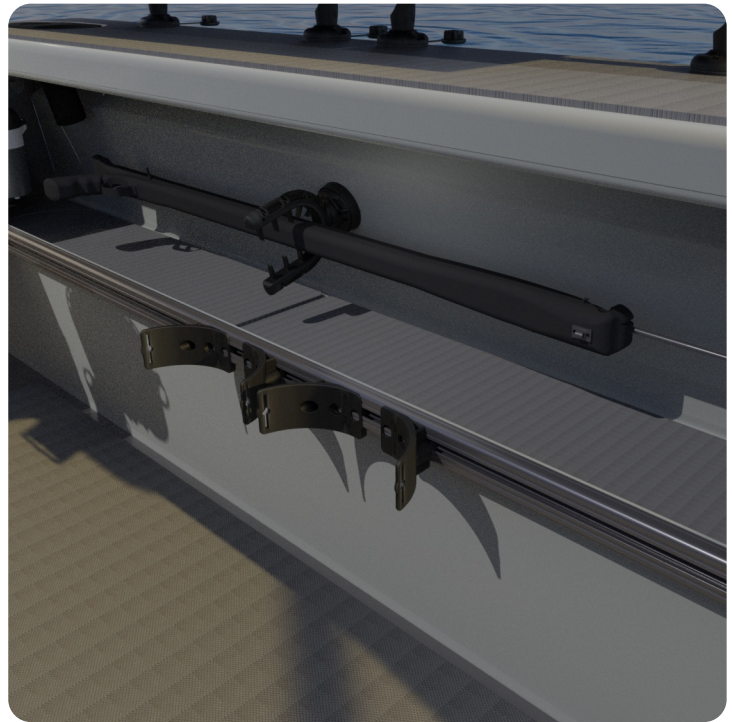
***MAKE IT YOUR OWN***

**/ SENATOR 500**

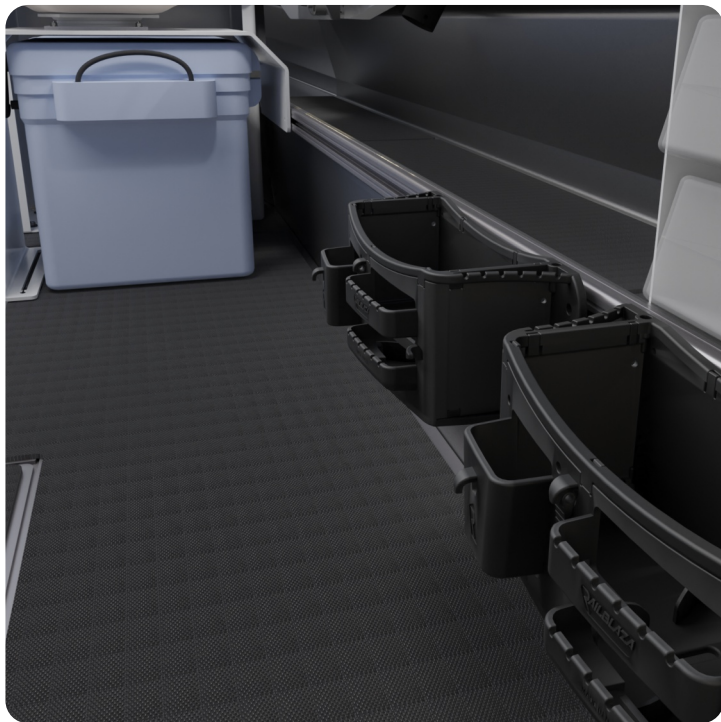
**+ BAIT BOARD & ROD HOLDER**



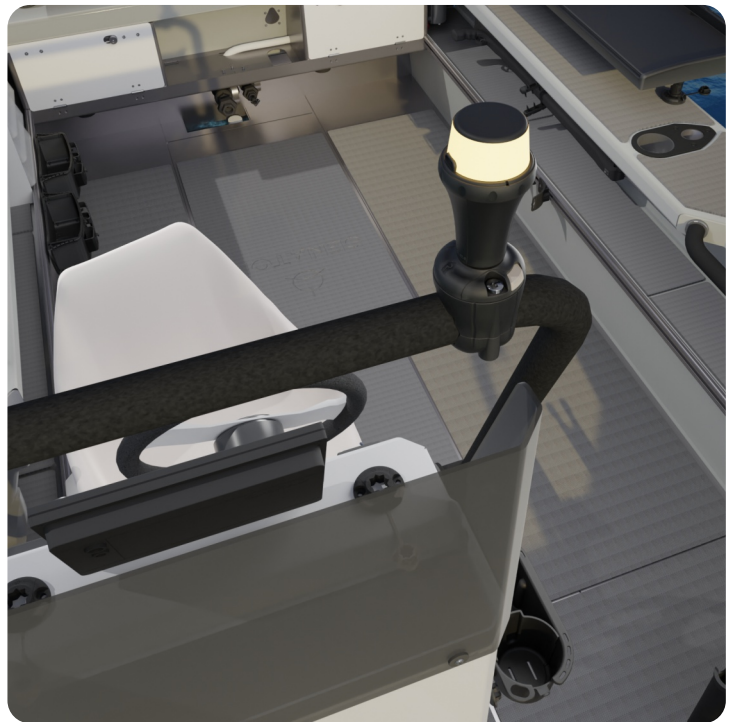
**+ SPEAR GUN & DIVE BOTTLE HOLDER**



**+ RAIL MOUNT CADDY**

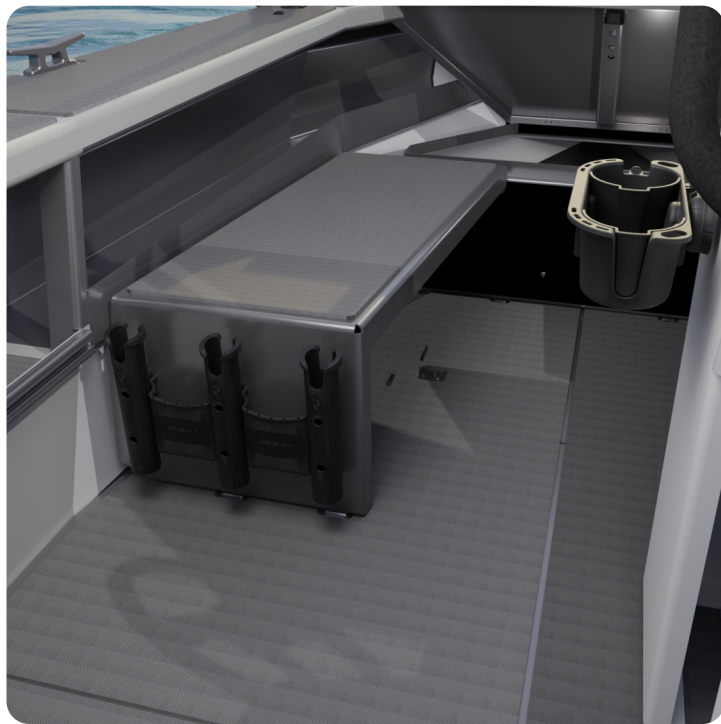


**+ NAV LIGHT**

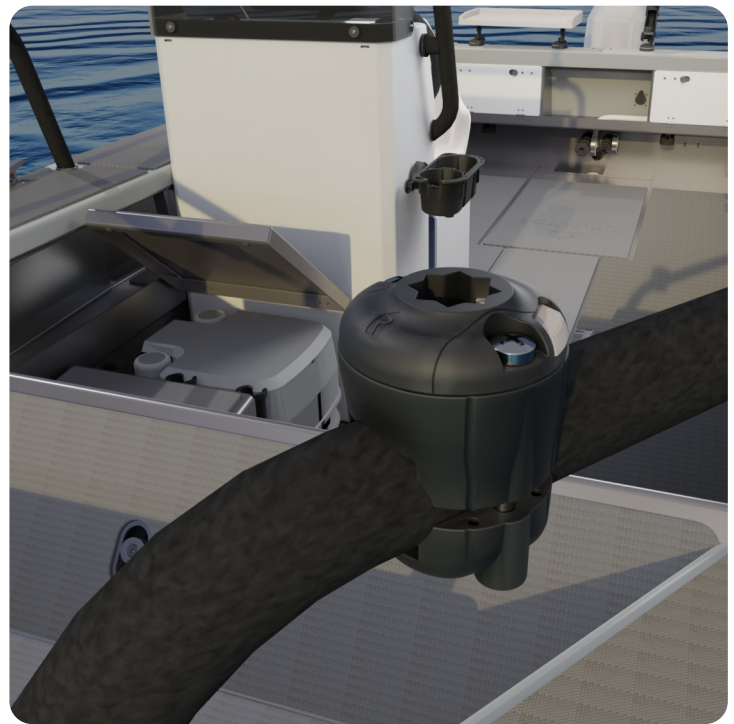


## / SENATOR 500

+ ROD HOLDER STORAGE



+ TUBE MOUNT STARPORT





## **DESIGN OPTIONS** Built around you

We know that every boatie has different needs. That's why a standard Senator comes with all of the 'must-haves' to ensure the utmost safety and usability. Then we put you in control of the 'nice-to-haves' that will make the boat just right for YOU.



## **GREAT RIDING** The legendary Senator ride

Let's face it, New Zealand can throw some ugly conditions our way. That's why when we design and build our boats, comfort is king. With higher cabin heights and stable great-riding hulls, you'll always feel safe and secure in a Senator.



## **BIGGER DECK** Bigger is always better

Every inch matters at the business end of your boat. Over the decades we've refined our decks to be the biggest in class, offering you and your mates the ultimate play area to do what you love.



## **BUILT TO SURVEY STANDARDS** Unparalleled buoyancy

Senator's construction standards have been developed through close partnership between our design and build team and of course - boaties just like you. The Senator Standard has become New Zealand's benchmark in pontoon boatbuilding.



## **100% KIWI MADE** Built by boaties, for boaties

We bring together a 'best-of-breed' design, boat building and finishing team. This gives Senator confidence that their boat is built by people who understand their needs. Senator is always listening, so if you have any ideas about how we can improve our designs to lead to a better day out on the water, we're all ears!



## **TRUE MEASURES** More boat for your buck

When comparing boats, look at the real measure. At Senator we measure the true length of the boat, we don't include the overhangs to make our boats seem longer than they are. More boat for your buck!

### **SENATOR HQ**

0800 736 286  
21 Hamilton Place,  
Onekawa, Napier 4110  
New Zealand

### **GET IN TOUCH WITH YOUR NEAREST DEALER**