



**SENATOR**

***RH770 LOCKING WHEELHOUSE  
CONFIGURATION***

<b><i>FOREWORD</i></b>	<b><i>3</i></b>
<b><i>FORWARD DECK</i></b>	<b><i>5-8</i></b>
<b><i>CABIN AND ROOF</i></b>	<b><i>9-11</i></b>
<b><i>CABIN INTERNAL</i></b>	<b><i>12-15</i></b>
<b><i>DECK</i></b>	<b><i>16-18</i></b>
<b><i>TRANSOM</i></b>	<b><i>20-22</i></b>
<b><i>DUCKBOARDS</i></b>	<b><i>23-24</i></b>
<b><i>HULL</i></b>	<b><i>25</i></b>

***PLEASE NOTE: TO ACHIEVE SENATOR'S CONTINUOUS IMPROVEMENT PROGRAM,  
DESIGNS AND THIS DOCUMENT MAY BE SUBJECT TO CHANGE.***

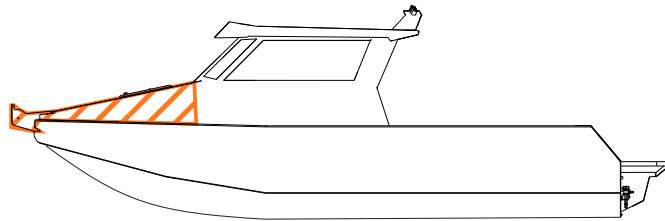
***THIS DOCUMENT SHOWCASES SOME OF THE AVAILABLE OPTIONS FOR THE RH 770,  
OPTIONS SEEN HERE MAY BE UPGRADES AND MAY NOT COME STANDARD WITH THE RH 770.  
FOR FURTHER ENQUIRES ABOUT UPGRADES AND OPTIONS PLEASE GET IN TOUCH WITH YOUR LOCAL DEALER.***

***FOR BEST REPRESENTATION IN THIS DOCUMENT THE CARPET LAYERS IN THE CABIN HAVE BEEN TURNED OFF.***

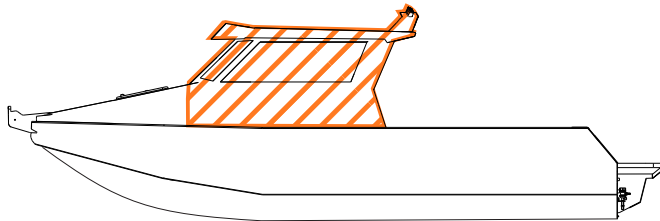


/ 770

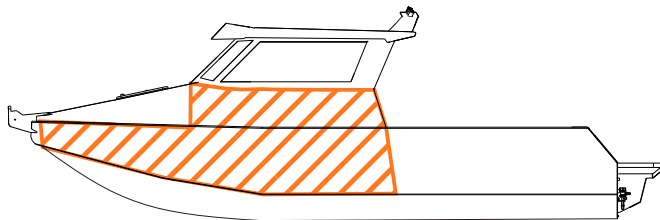
**FORWARD DECK**



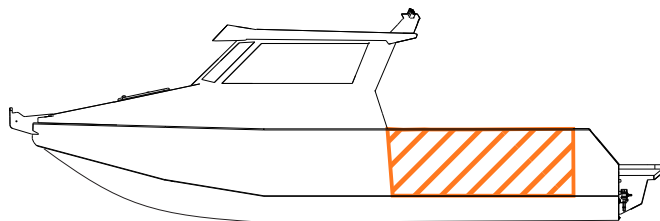
**CABIN AND ROOF**



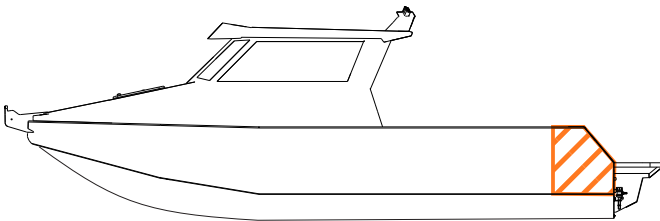
**CABIN INTERNAL**



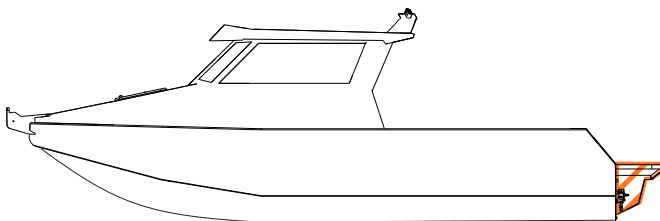
**DECK**



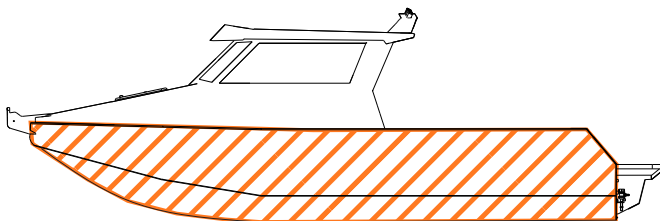
**TRANSOM**



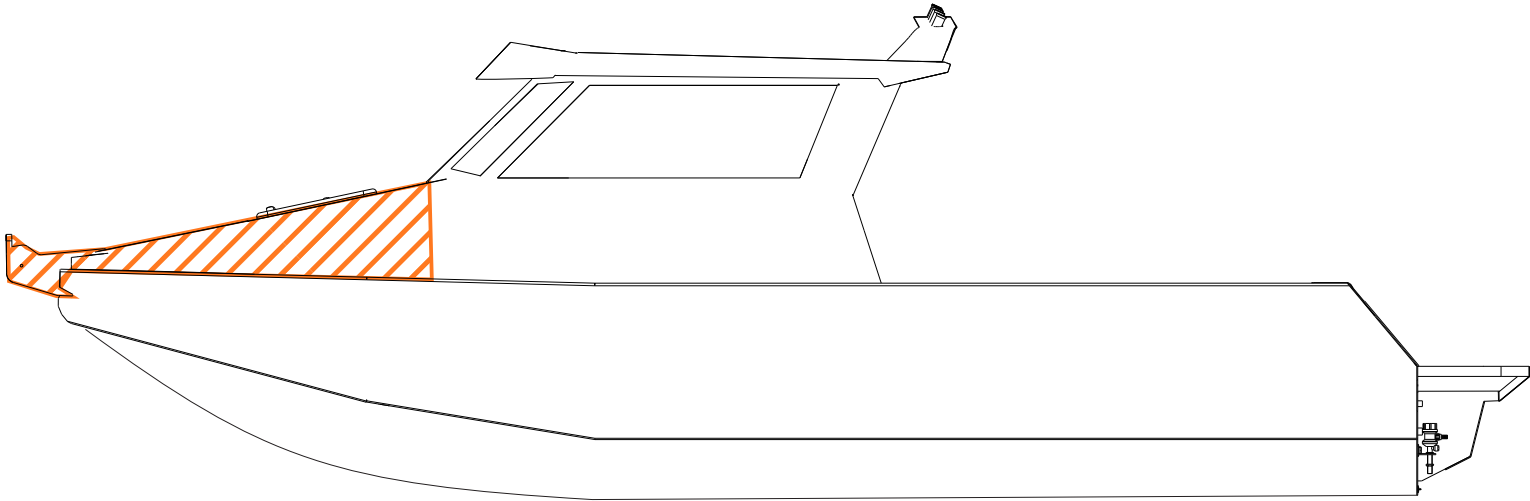
**DUCKBOARDS**



**HULL / OUTER PONTON**



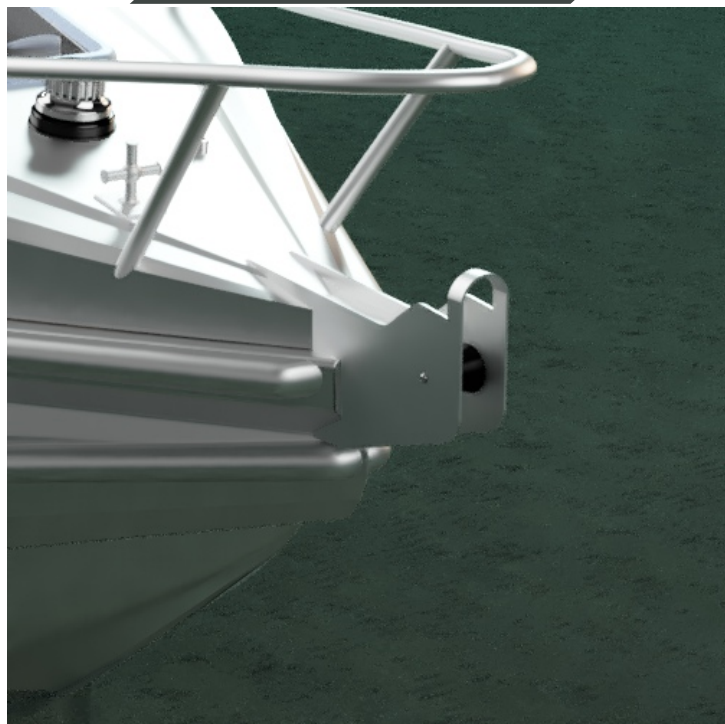
# ***FORWARD DECK OPTIONS***



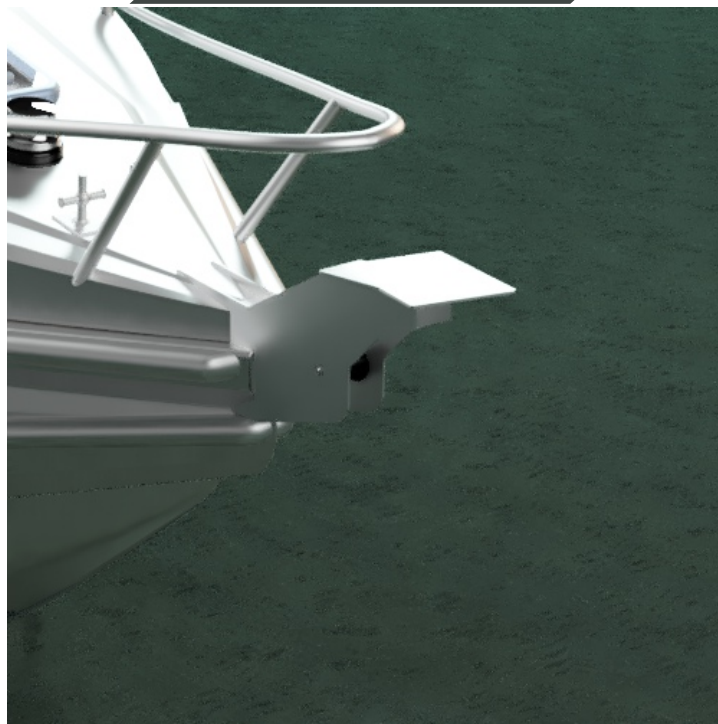


/ 770

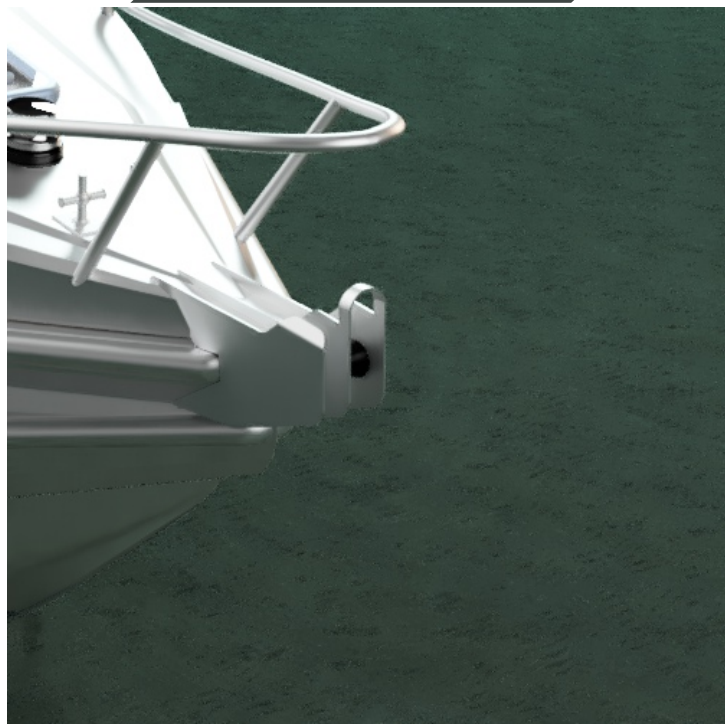
STANDARD - HOOP OVER FAIRLEAD



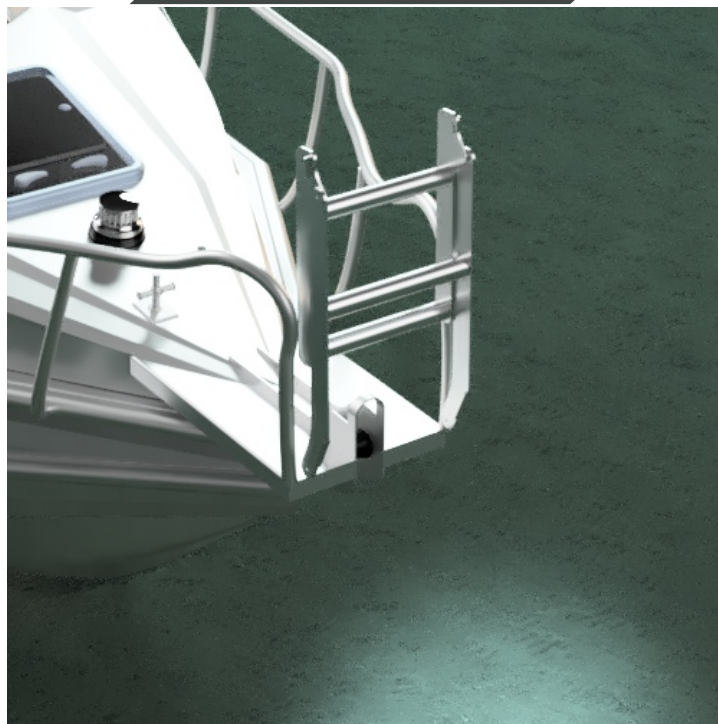
+MINNKOTA FAIRLEAD



+MOORING FAIRLEAD



+BOW LADDER FAIRLEAD



/ 770

STANDARD BOW RAIL



+1020 BOW RAIL



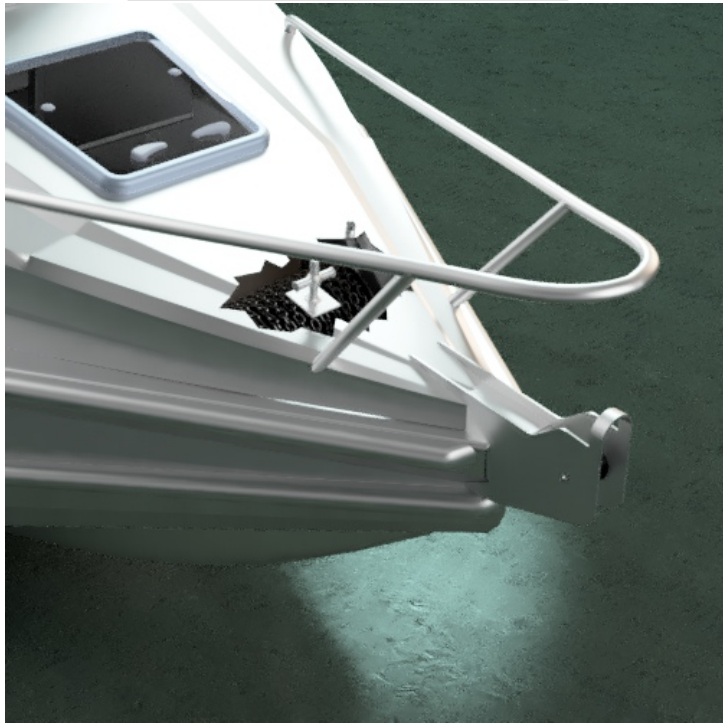
+WALK AROUND 1020 BOW RAIL



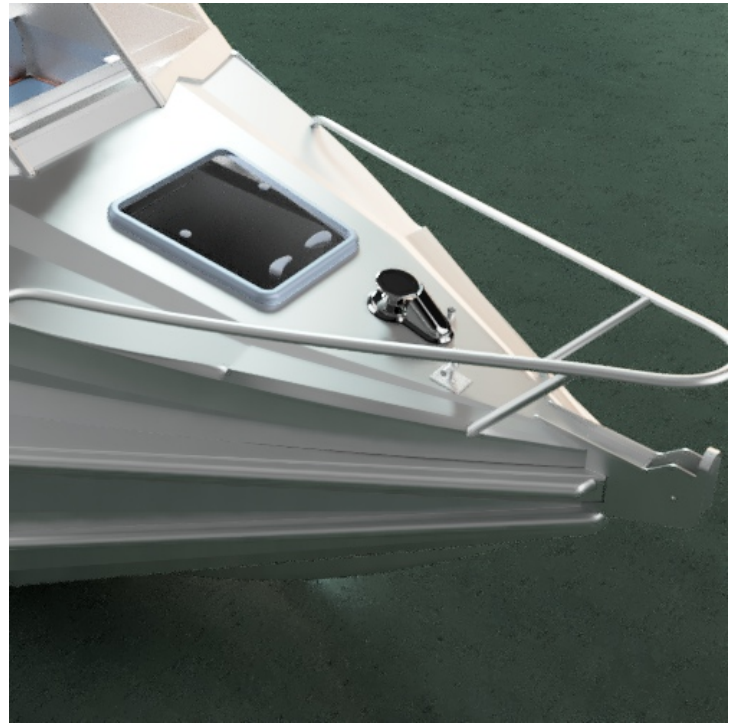


/ 770

+DRUM WINCH

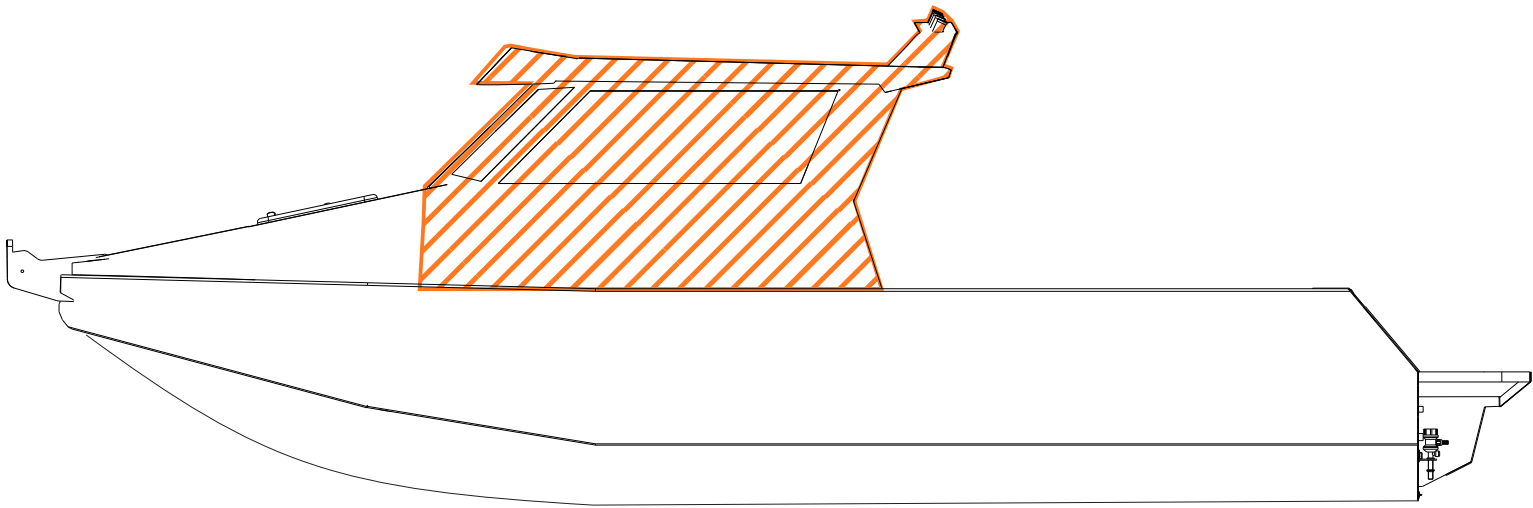


+AUTO CAPSTAN



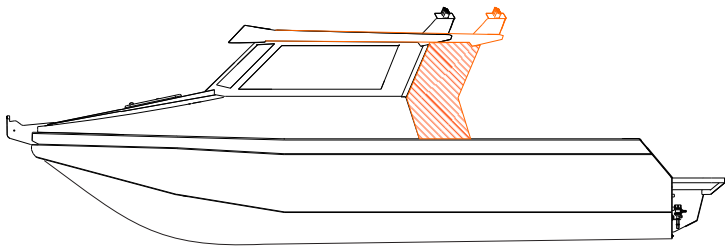


## ***CABIN AND ROOF OPTIONS***

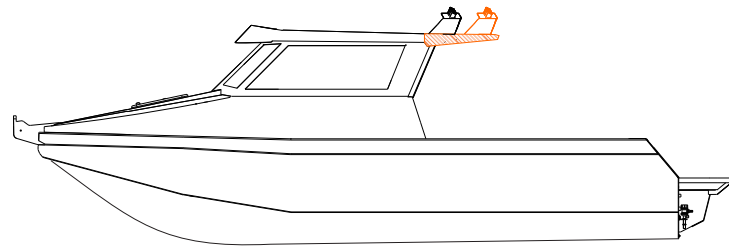


/ 770

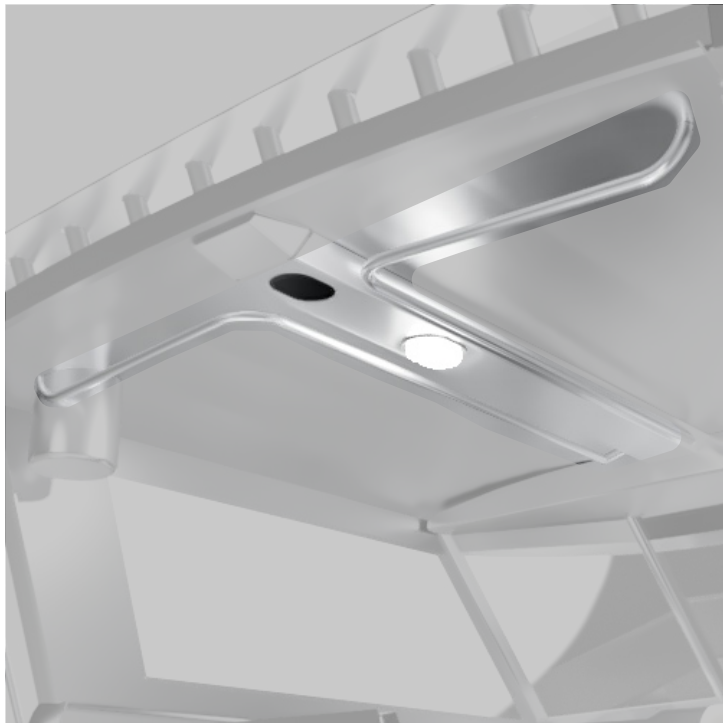
**CABIN EXTENSION**



**ROOF EXTENSION**



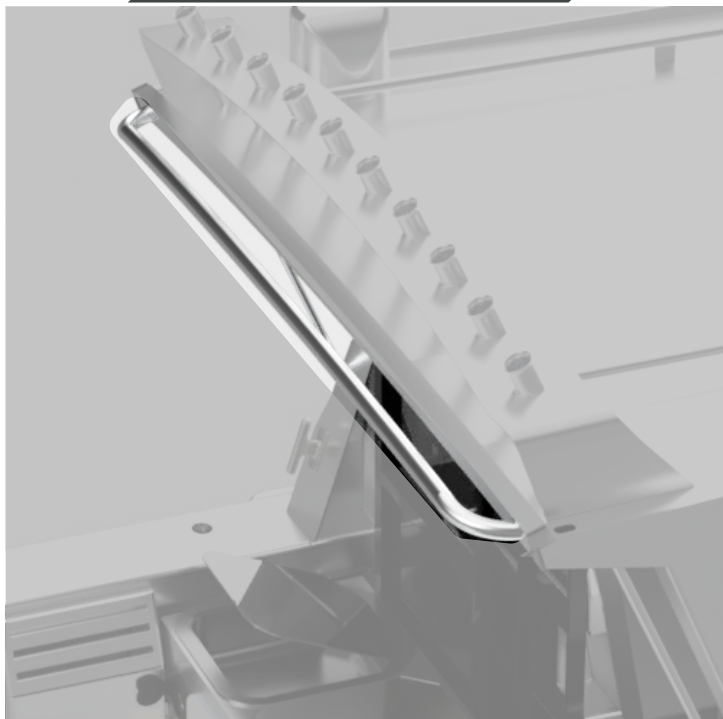
**L SHAPE HAND RAILS**



**STRAIGHT HAND RAILS**

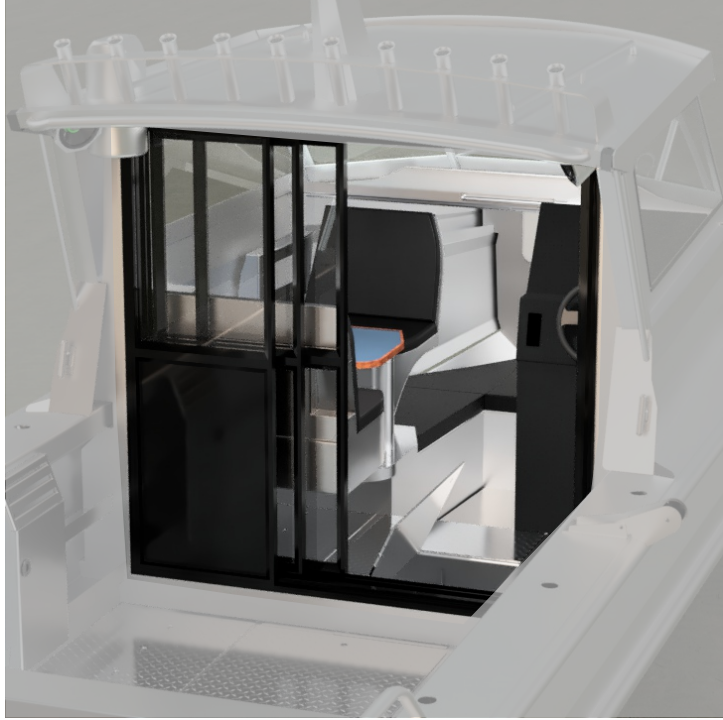


**RHS HANDRAILS**

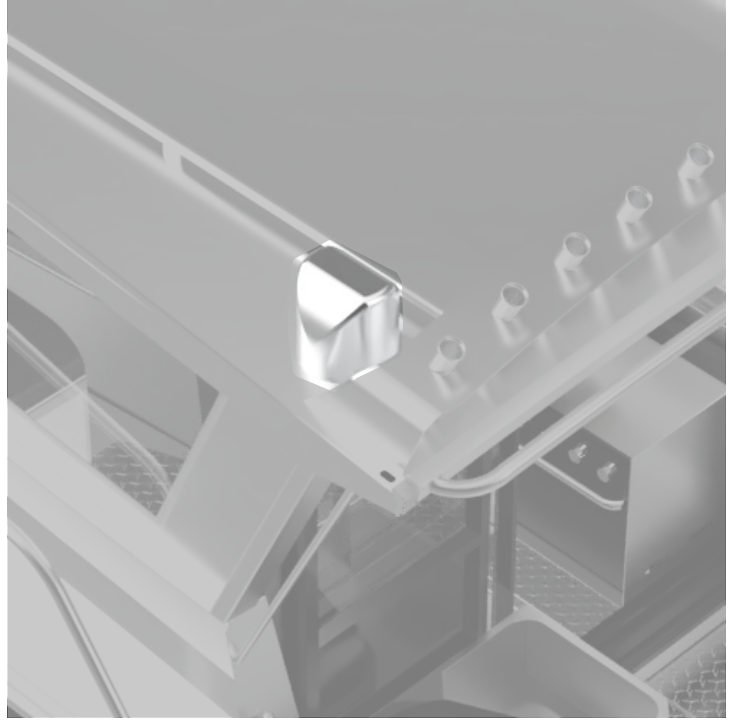


/ 770

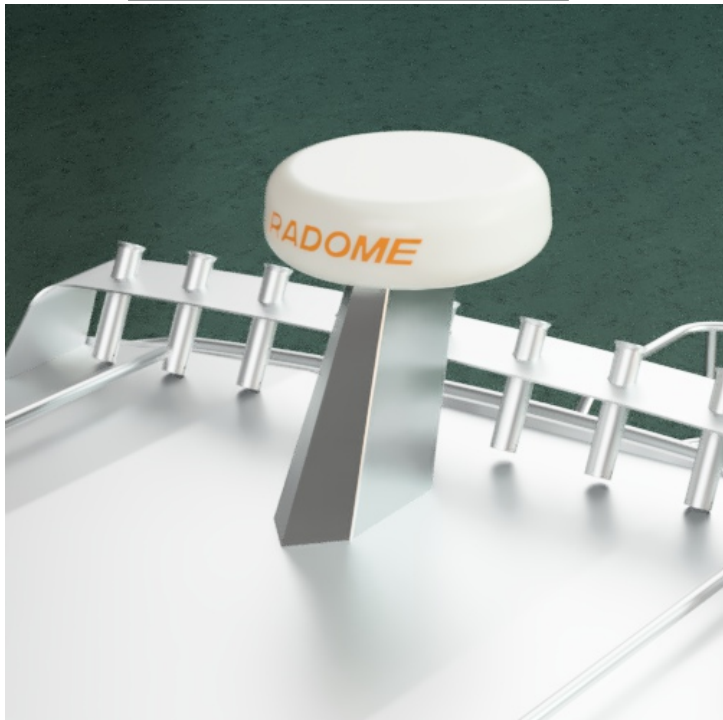
**+DOUBLE STACKER DOORS**



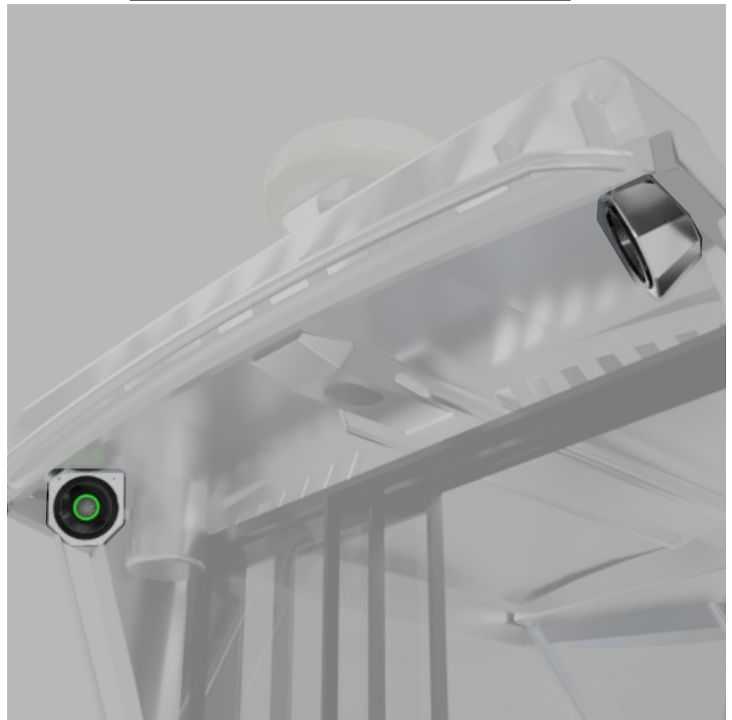
**+LPG**



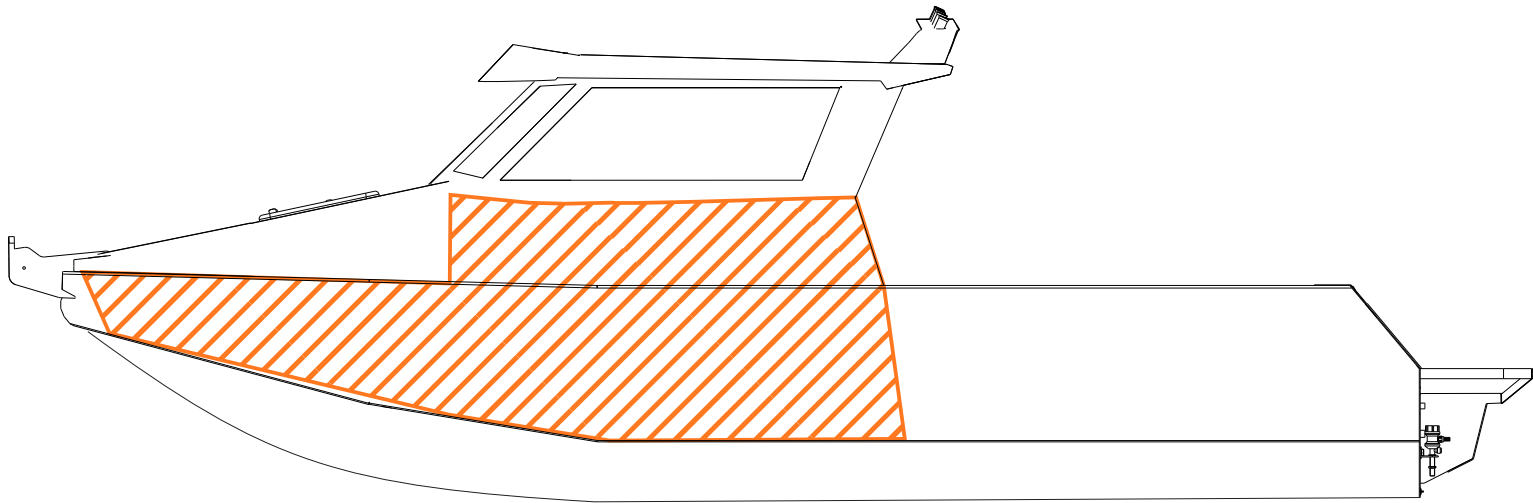
**+RADAR MOUNT**



**+ROOF OVERHANG SPEAKERS**



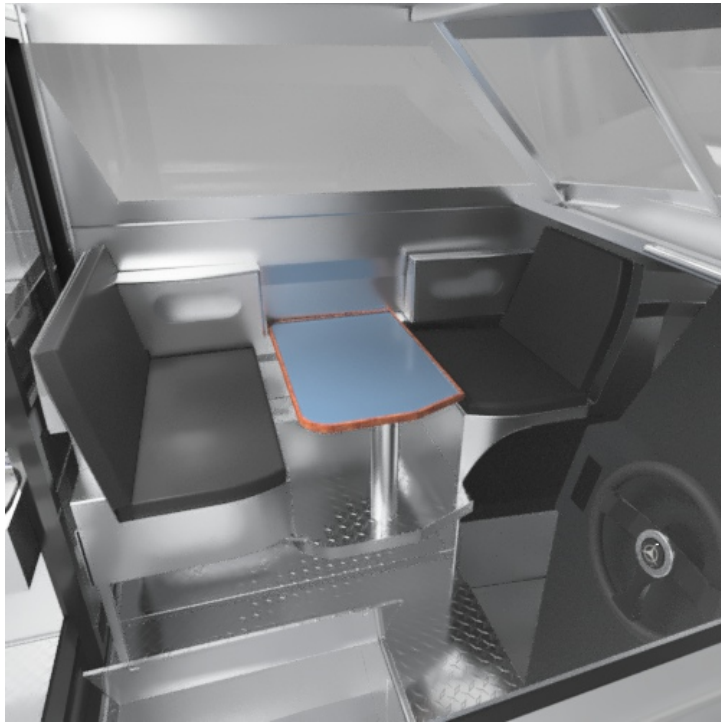
## ***CABIN INTERNAL OPTIONS***



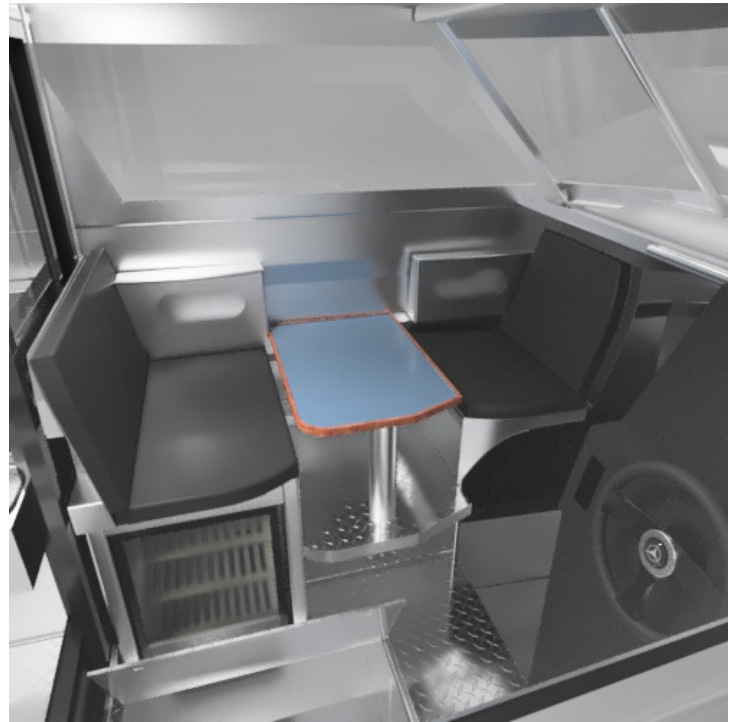


/ 770

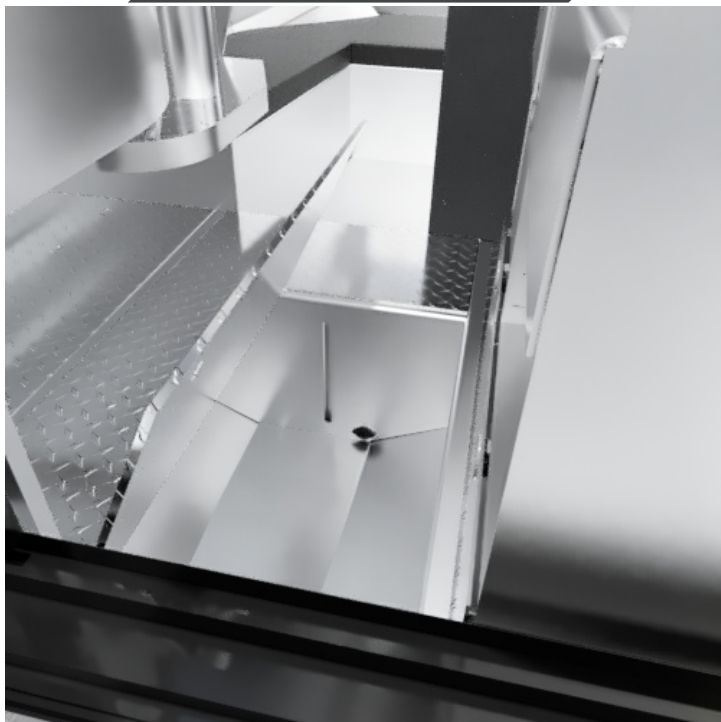
+CLUB SEAT



+CLUB FRIDGE

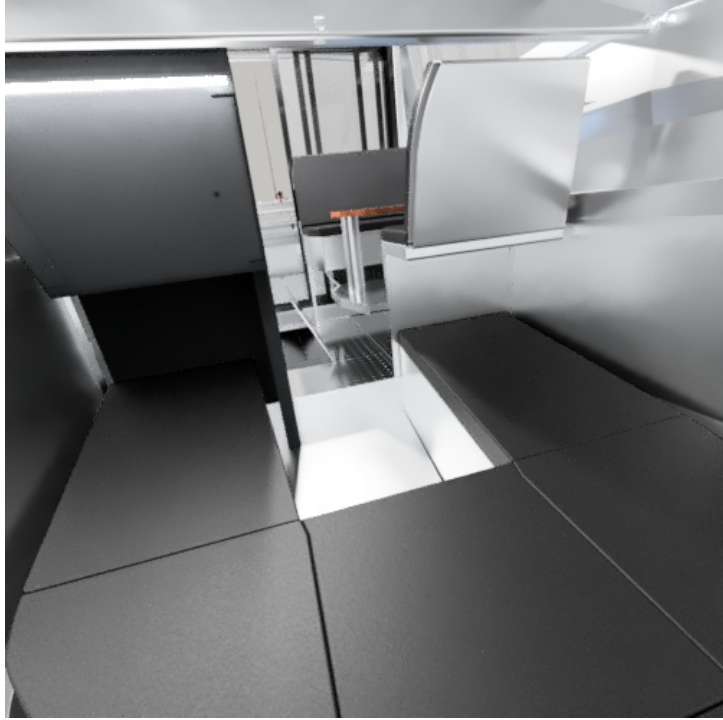


+WATER TANK

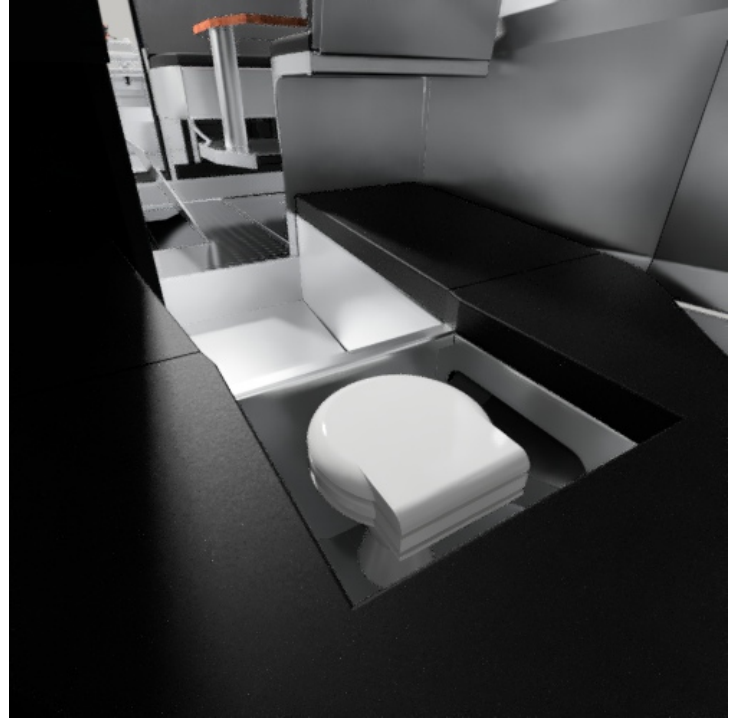


/ 770

*BUNKS*

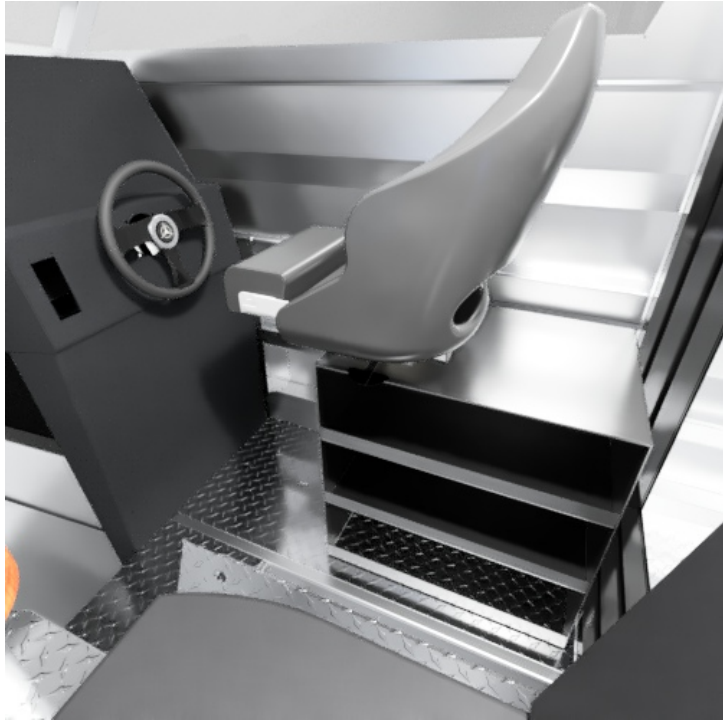


*+TOILET*



/ 770

+SHELF HELM SEAT



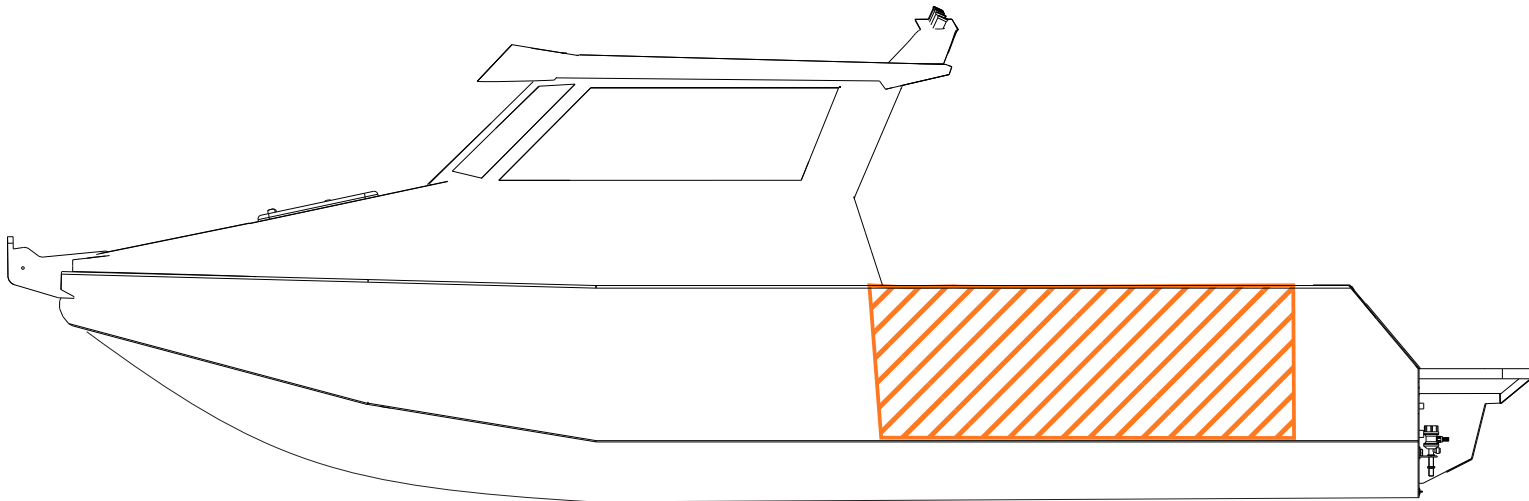
+FRIDGE HELM SEAT



+OVEN HELM SEAT WITH FABRICATED SEAT



# **DECK OPTIONS**



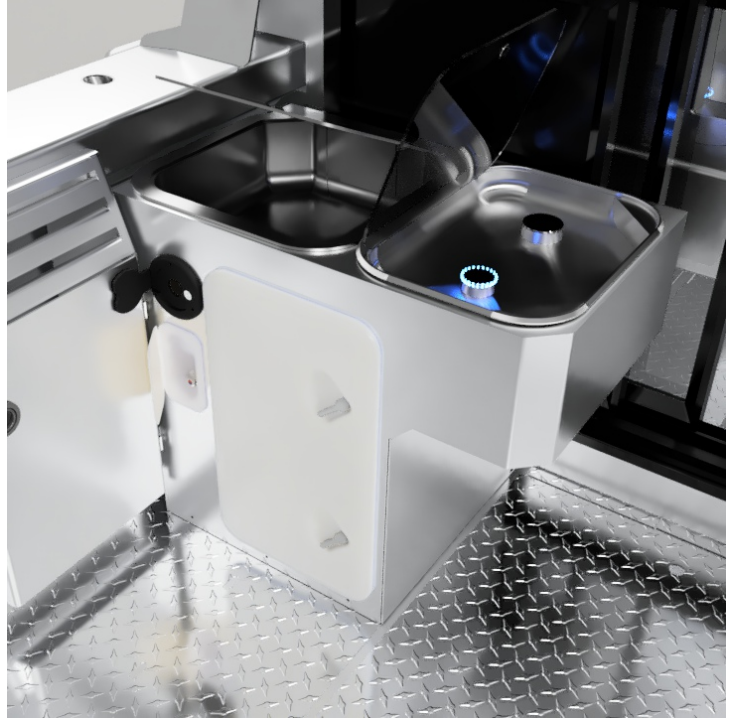


**/ 770**

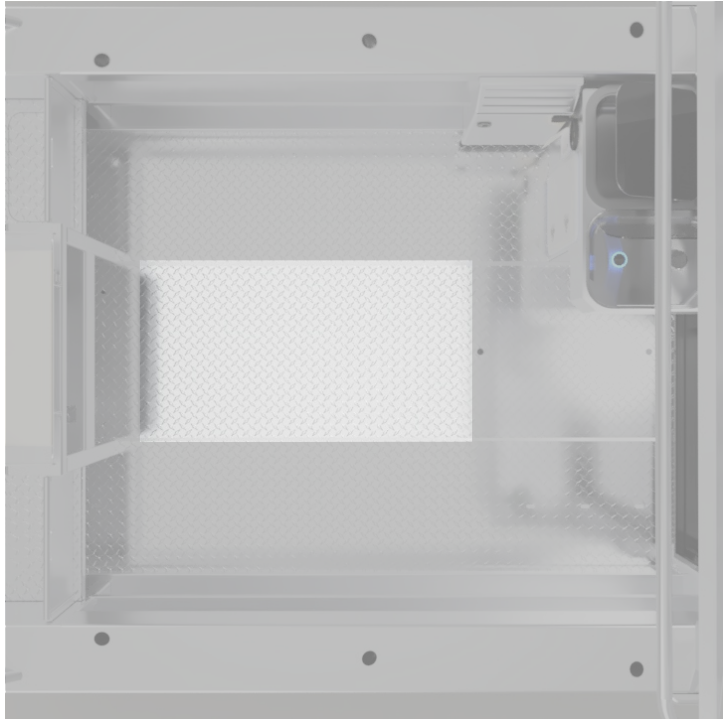
**+CALIFONT**



**+DECK SEAT**

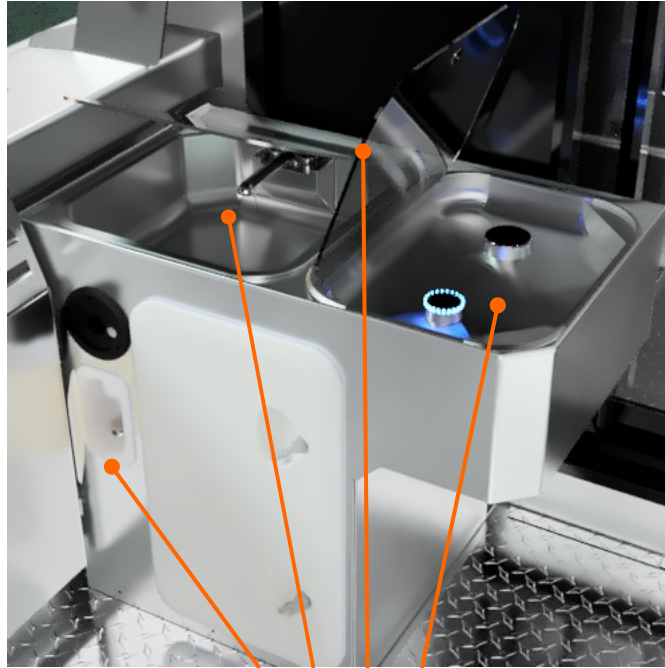


**FUEL TANK**



**/ 770**

**+DECK SEAT**



**PULL OUT SHOWER AND FRESH WATER**



**GAS TOP UNDER SQUAB**



**SINK UNDER SQUAB**

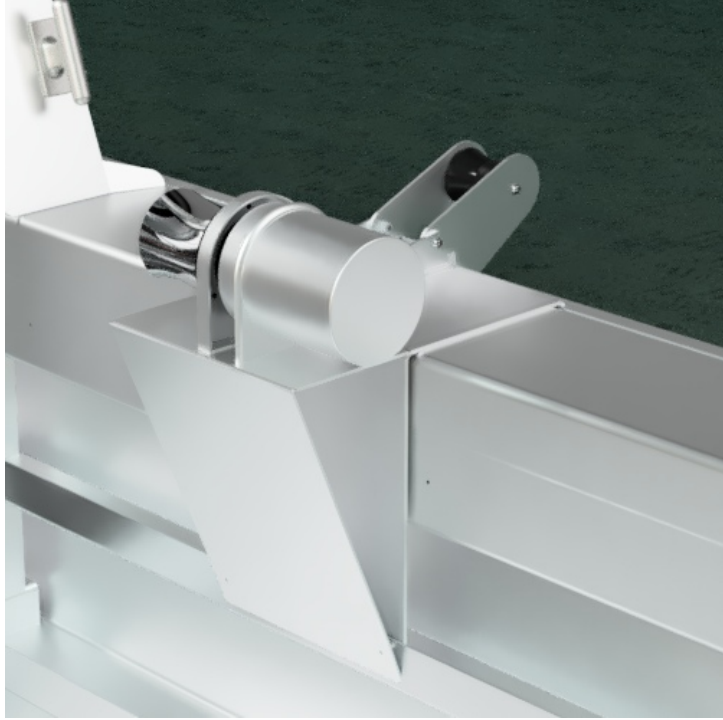


**SQUABS ON TOP**



/ 770

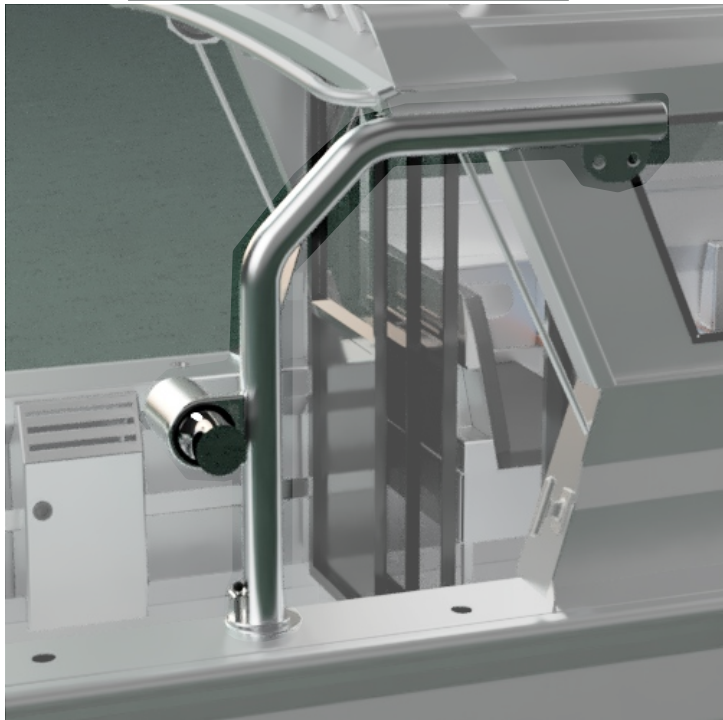
**+GUNWALE MOUNT WINCH**



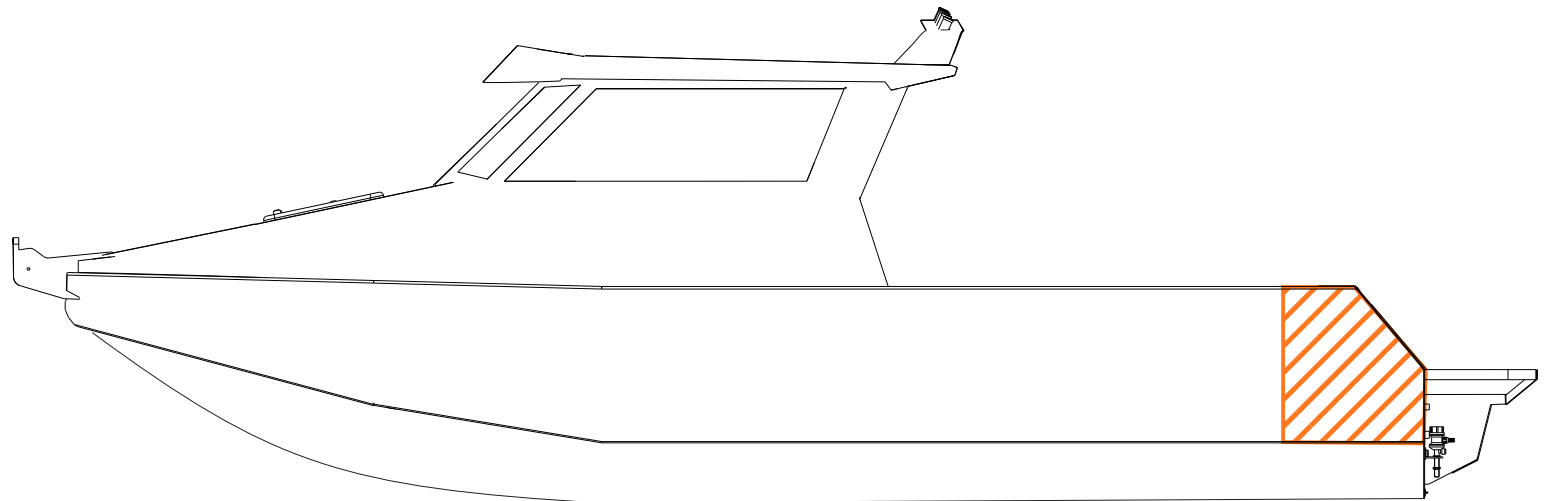
**+WELDED WINCH**



**+CRAY BOOM**



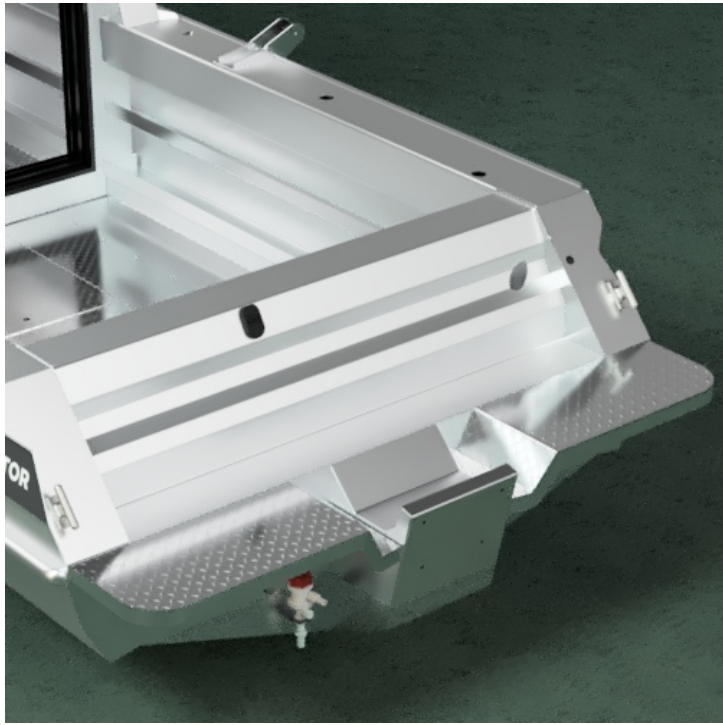
# ***TRANSOM SELECTION***



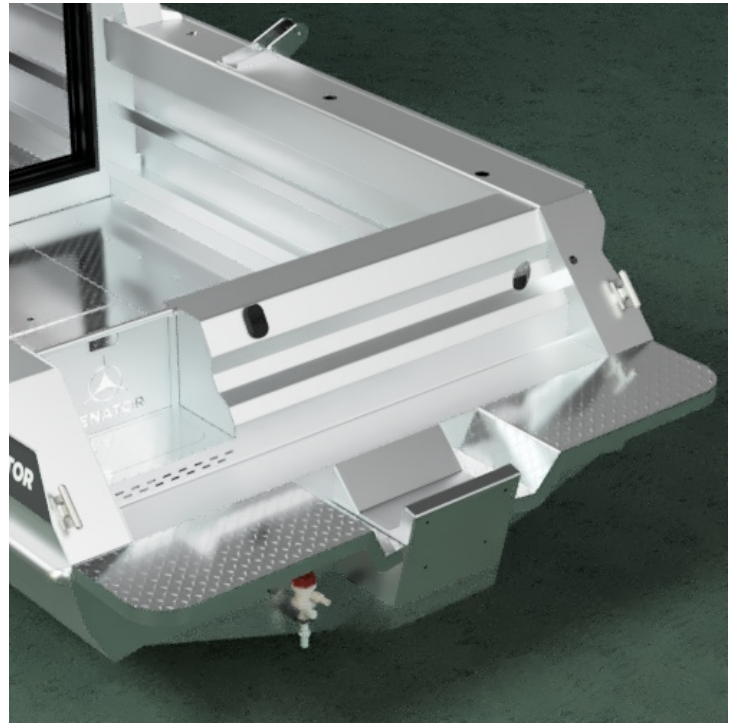


/ 770

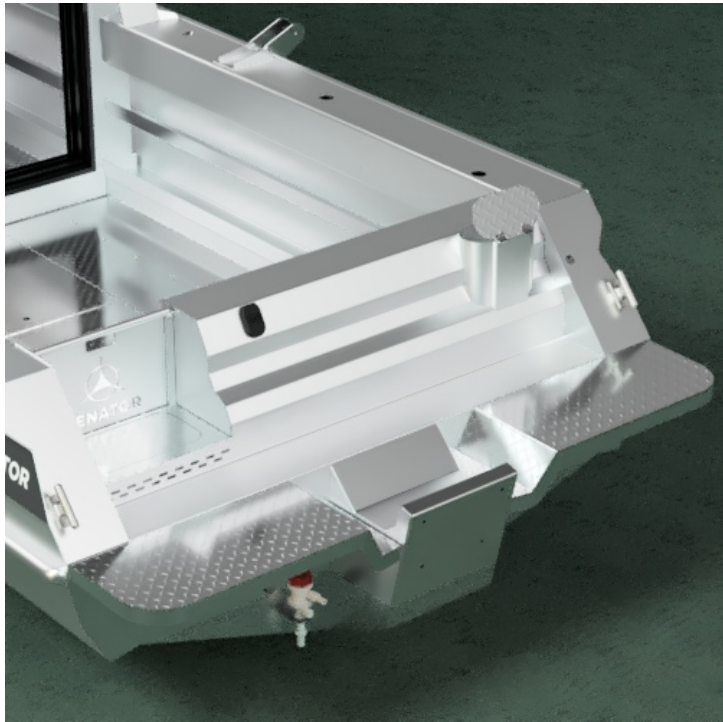
**STANDARD: FULL TRANSOM**



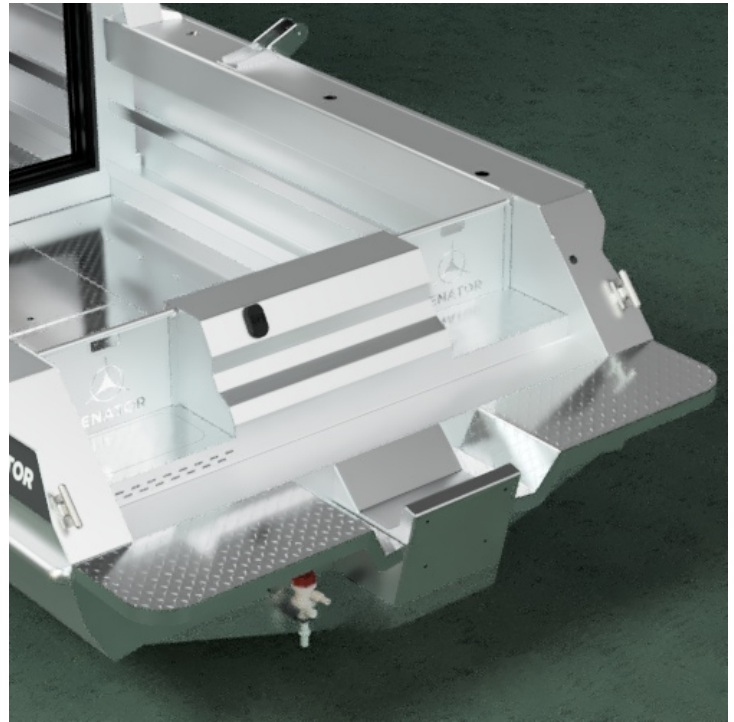
**+ WALKTHROUGH WITH LIVE BAIT TANK**



**+ WALKTHROUGH WITH LIVE BAIT TANK AND TUNA TUBES**

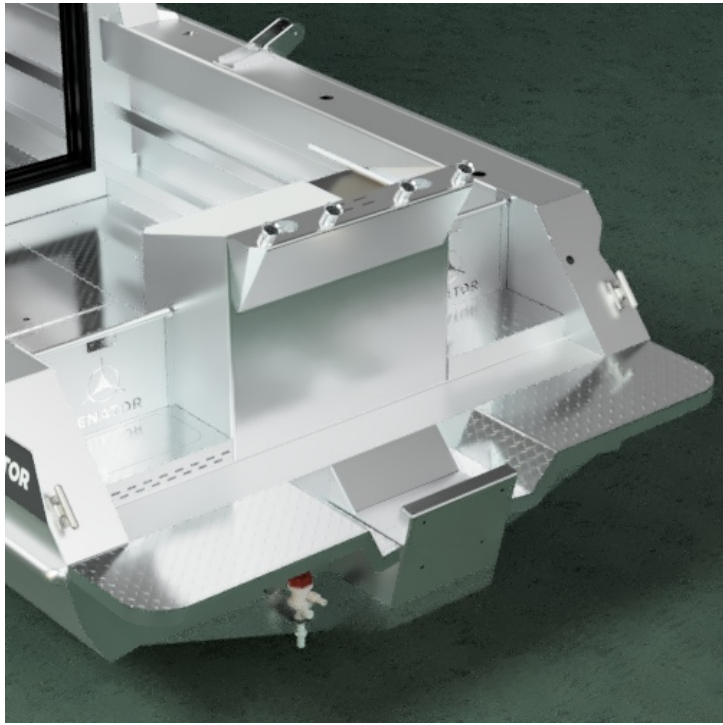


**+ TWIN WALKTHROUGH WITH LIVE BAIT TANK PORT SIDE**

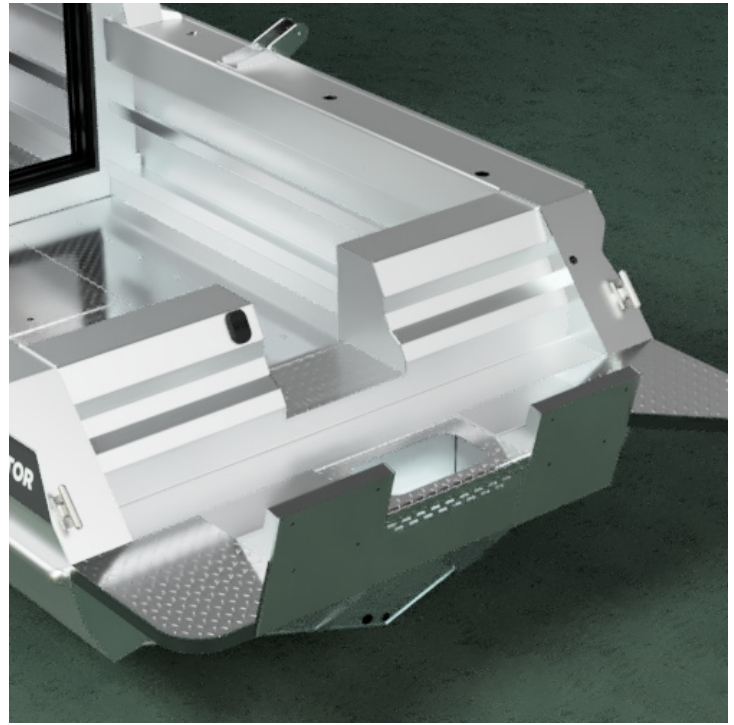


/ 770

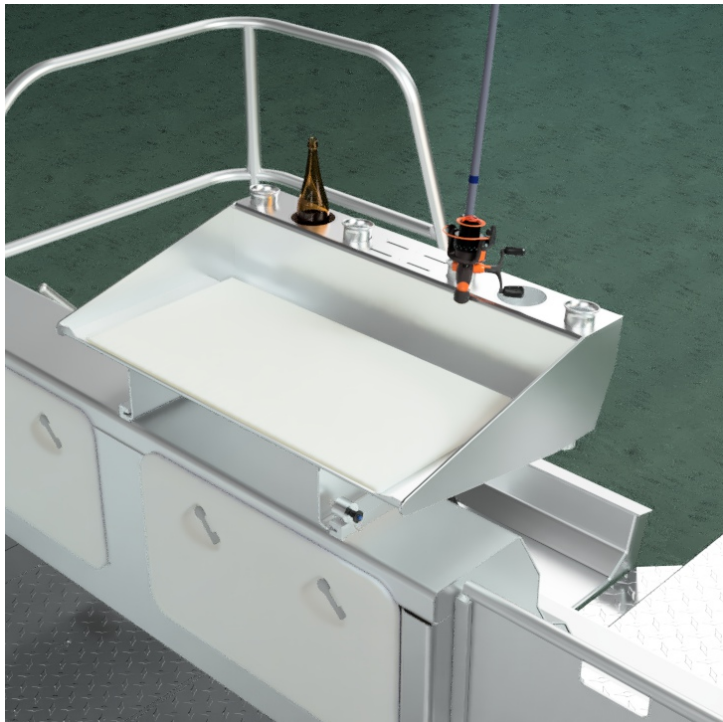
+CENTRAL BAIT STATION



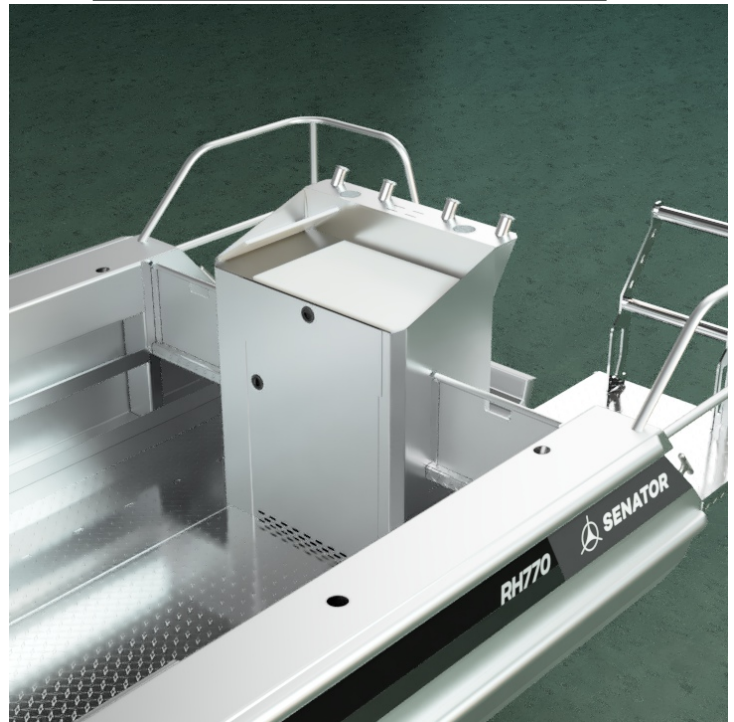
+CENTRE WALK THOUGH



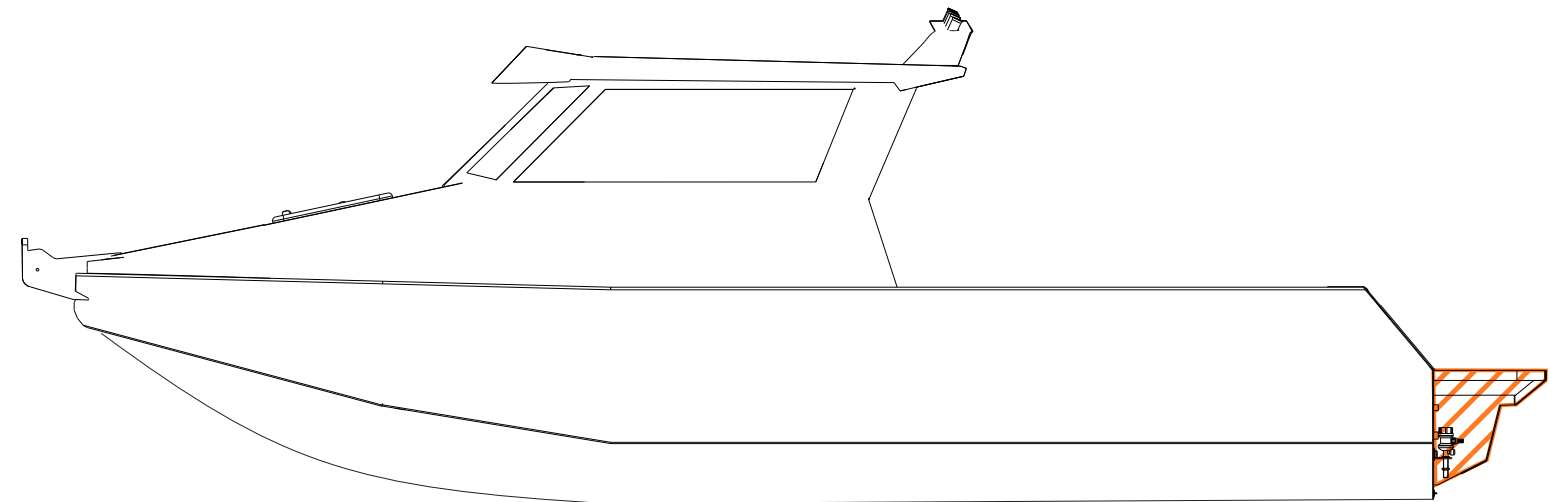
+800MM BAIT BOARD WITH CUP HOLDER



+ CENTRAL BAIT STATION



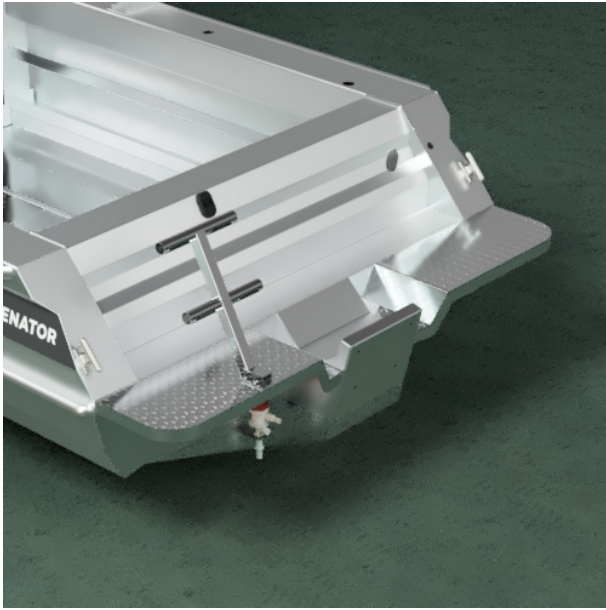
# ***DUCKBOARD SELECTION***



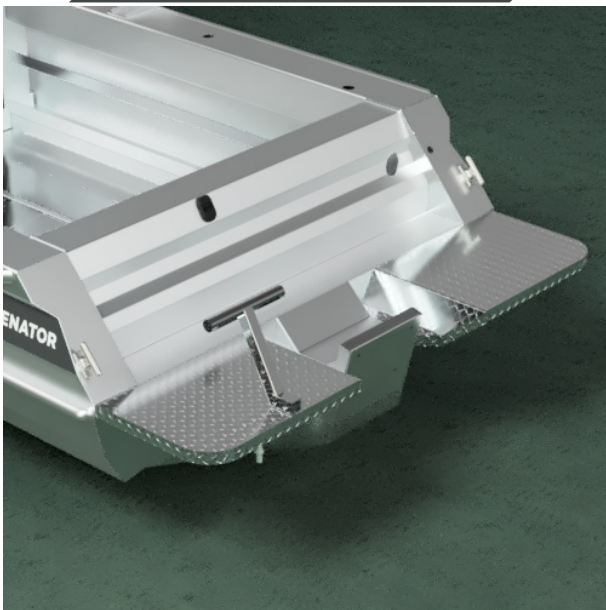


/ 770

**+2 RUNG LADDER**



**+EXTENDED DUCKBOARD**



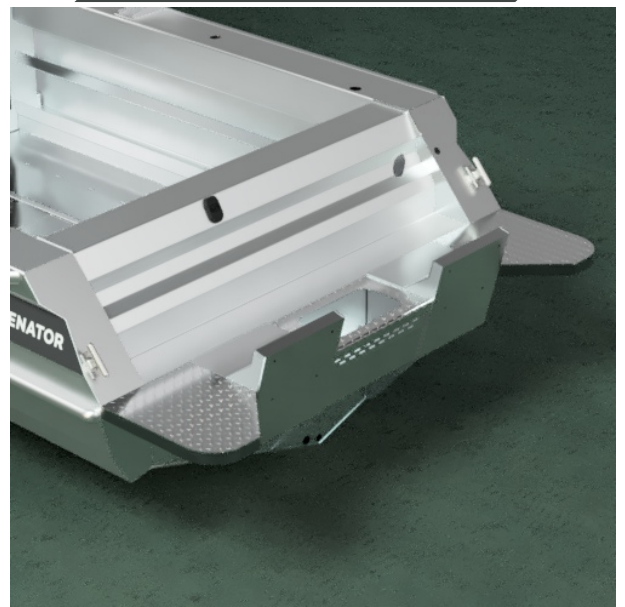
**+EXTENDED & TRANSOM CAGE**



**+TWIN CLOSE ENGINE POD WITH CAGE**



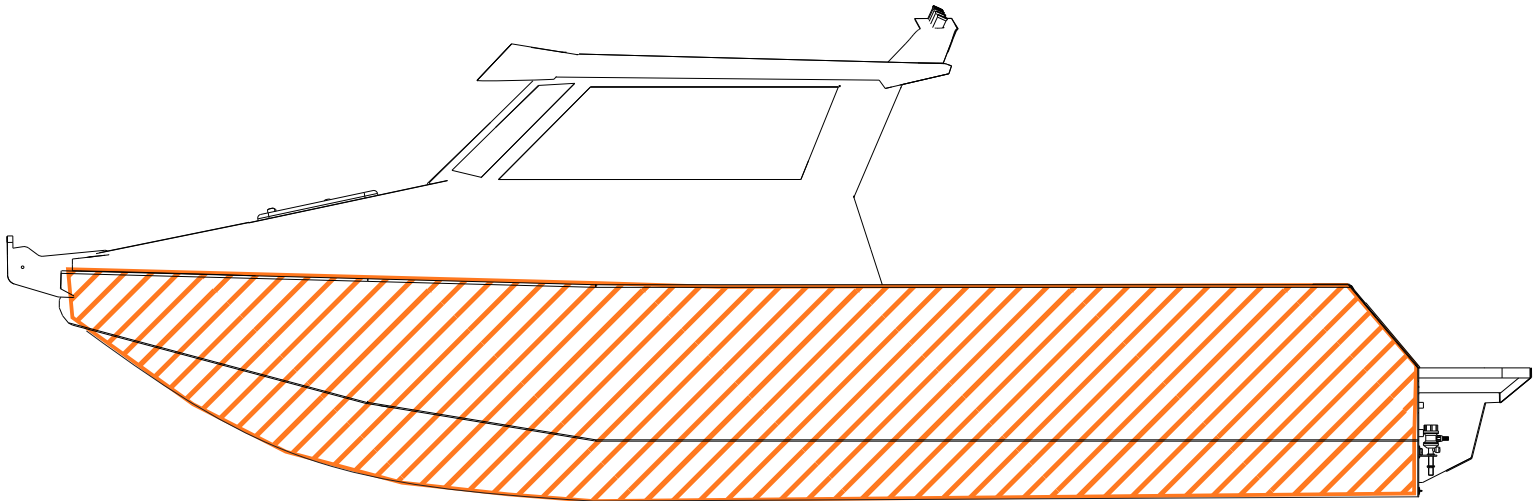
**+TWIN WIDE ENGINE POD, LIVE BAIT TANK**





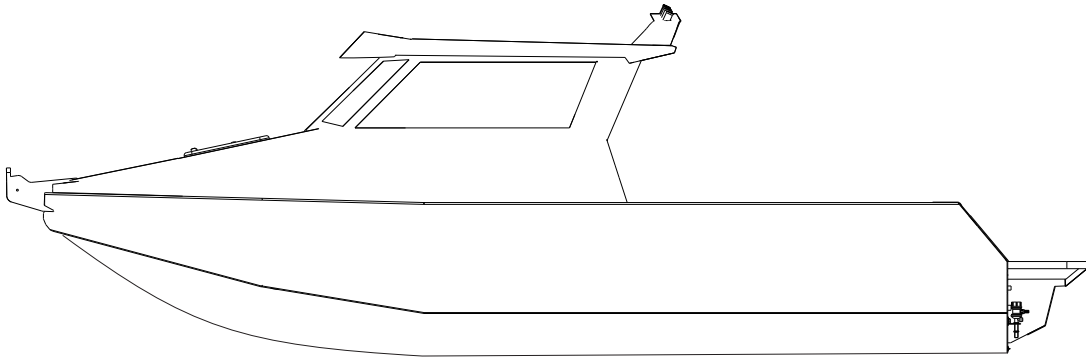
**/ 770**

## ***HULL / OUTER PONTON***

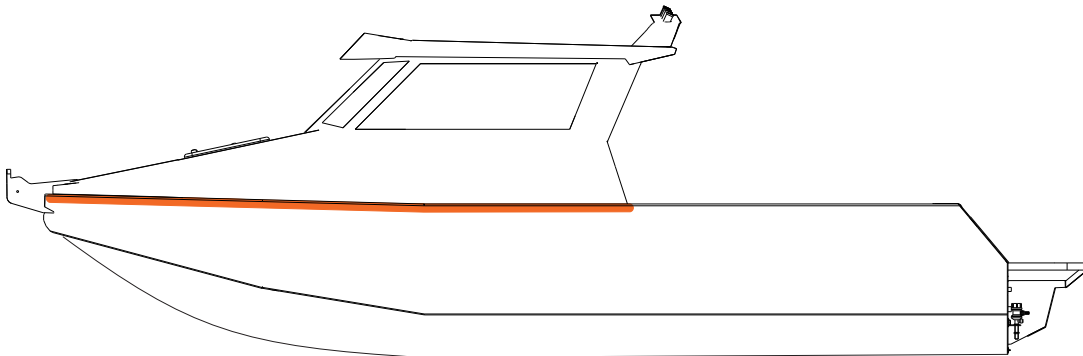


/ 770

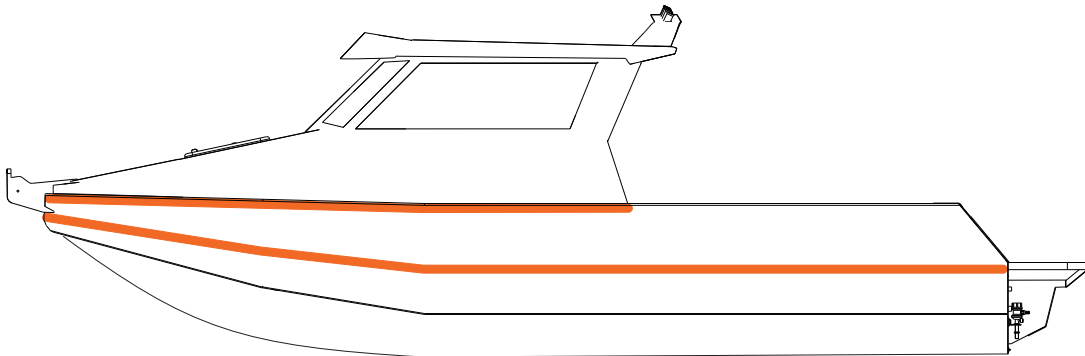
PONTOON STANDARD



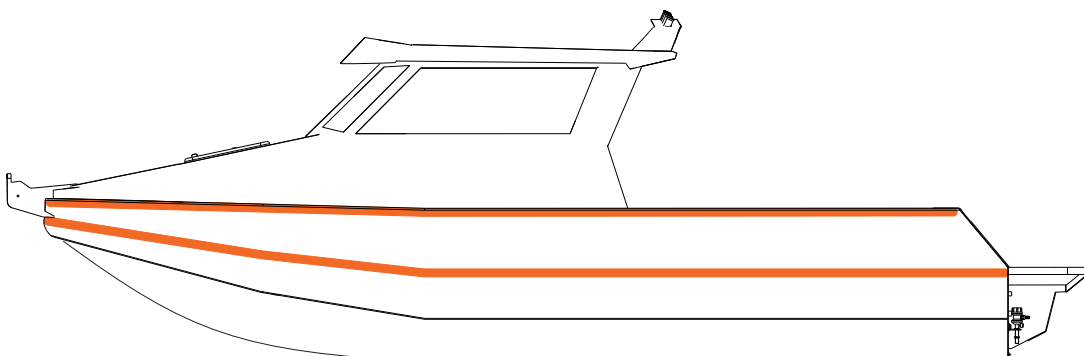
+HALF BUMP RAIL



+HALF & FULL BUMP RAIL

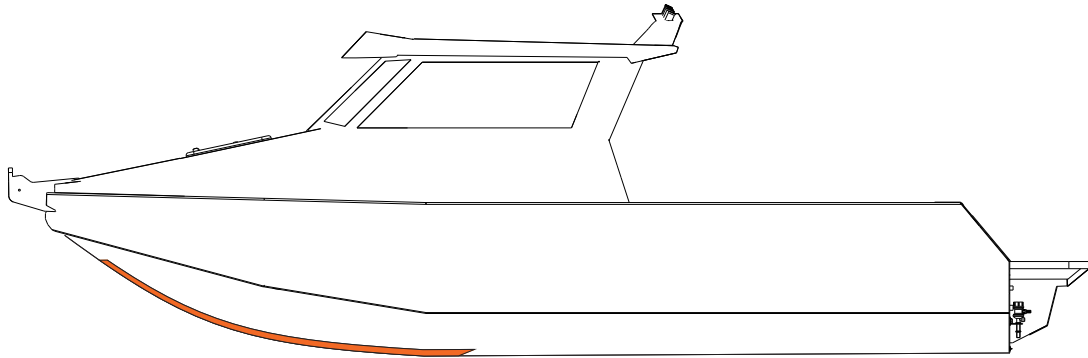


+TWIN FULL BUMP RAIL

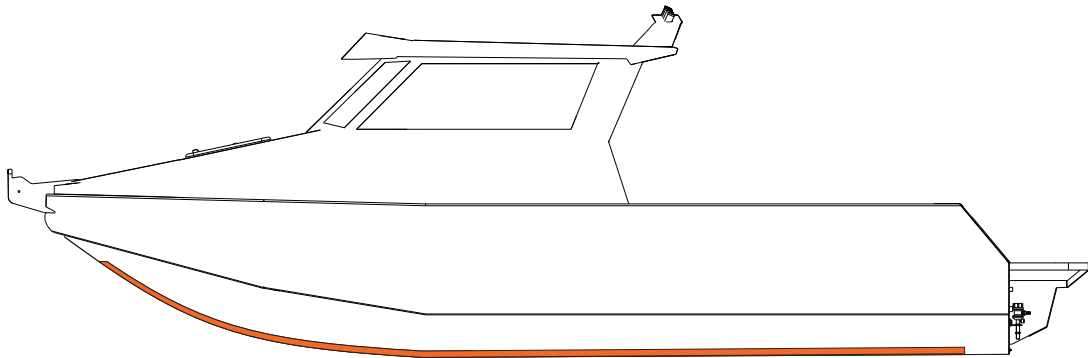


/ 770

HALF LENGTH KEEL WEAR STRIP



FULL LENGTH KEEL WEAR STRIP





## **DESIGN OPTIONS**

**Built around you**

We know that every boatie has different needs. That's why a standard Senator comes with all of the 'must-haves' to ensure the utmost safety and usability. Then we put you in control of the 'nice-to-haves' that will make the boat just right for YOU.



## **GREAT RIDING**

**The legendary Senator ride**

Let's face it, New Zealand can throw some ugly conditions our way. That's why when we design and build our boats, comfort is king. With higher cabin heights and stable great-riding hulls, you'll always feel safe and secure in a Senator.



## **BIGGER DECK**

**Bigger is always better**

Every inch matters at the business end of your boat. Over the decades we've refined our decks to be the biggest in class, offering you and your mates the ultimate play area to do what you love.



## **BUILT TO SURVEY STANDARDS**

**Unparalleled buoyancy**

Senator's construction standards have been developed through close partnership between our design and build team and of course - boaties just like you. The Senator Standard has become New Zealand's benchmark in pontoon boatbuilding.



## **100% KIWI MADE**

**Built by boaties, for boaties**

We bring together a 'best-of-breed' design, boat building and finishing team. This gives Senator confidence that their boat is built by people who understand their needs. Senator is always listening, so if you have any ideas about how we can improve our designs to lead to a better day out on the water, we're all ears!



## **TRUE MEASURES**

**More boat for your buck**

When comparing boats, look at the real measure. At Senator we measure the true length of the boat, we don't include the overhangs to make our boats seem longer than they are. More boat for your buck!

### **SENATOR HQ**

**0800 736 286**  
21 Hamilton Place,  
Onekawa, Napier 4110  
New Zealand

### **GET IN TOUCH WITH YOUR NEAREST DEALER**

**Whangarei** Warren Hay Marine, 09 430 2666 **Auckland** Auckland Marine Centre, 09 271 1575  
**Hamilton** Rollos Marine, 0800 804 809 **Gisborne** Harbourview Marine, 06 868 8686  
**Hawke's Bay** Hawke's Bay Marine, 06 843 5001 **Kapiti Coast** Boat City Paraparaumu, 04 298 5931  
**Nelson** Haven Pleasure Boats, 03 548 5864 **Christchurch** Mr Boats, 03 384 2726  
**Timaru** Mr Boats, 03 684 4107